



INNOVATION

UdiCLIMATE® SYSTEM The interior insulation system with integrated climate chambers



UdiCLIMATE® SYSTEM is a universal supplementary product for the **interior insulation of roofs and walls**. The distinctive feature of this system is that it combines the use of numerous, almost stationary, columns of air. Through the use of special climate chambers arranged in a honeycomb form in combination with specially selected wood-fibre insulation boards, the stationary columns of air are enclosed within the insulation system. This combination provides a further stabilisation for an optimal room climate, dedicated transport of the air moisture, improved acoustic and thermal insulation values and an increased heat shield in the summer. The special climate chamber structure in combination with the wood-fibre insulation boards ensures a very high flexural strength for the application of loads e.g. interior plaster/render coats or blown-in insulation applied behind the insulating layer, without any warping of the external surface. Additional load bearing battens are not required.

Properties

- above average flexural strength
- excellent acoustic and thermal insulation values
- climate stabilising – prevents the radiation of the cold
- no mould development
- environmentally-friendly, free of harmful substances and ecological
- simple and easy one man installation using standard wood-working tools
- saves work as additional roof battens are not required
- tongue and groove joints on all edges, no warping
- suitable for direct plaster coatings or wallpaper



Application areas

- enables the subsequent interior insulation of walls, ceilings and roof areas
- suitable for subsequent roof/loft installations, bridging of rafters without the need for additional battens
- additional acoustic insulation measures for walls, ceilings and roofs
- cladding of stud walls
- bridging of cracks in walls, ceilings and roof constructions

Installation

- Fixing of the boards with **UdiMONTAGE® Insulation render screw**
- Gluing of the tongue and groove joints using **UdiSTEAM® FIX-System adhesive**

Technical Data **UdiCLIMATE® SYSTEM** :

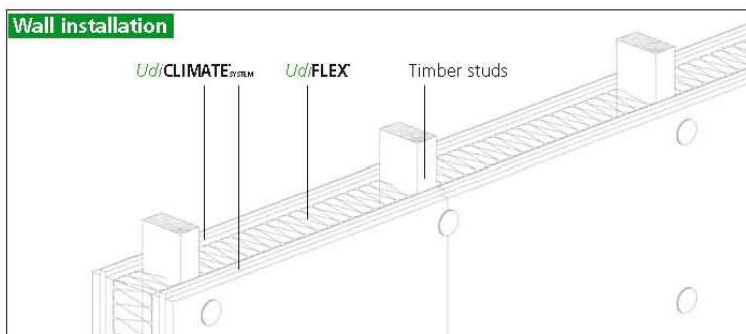
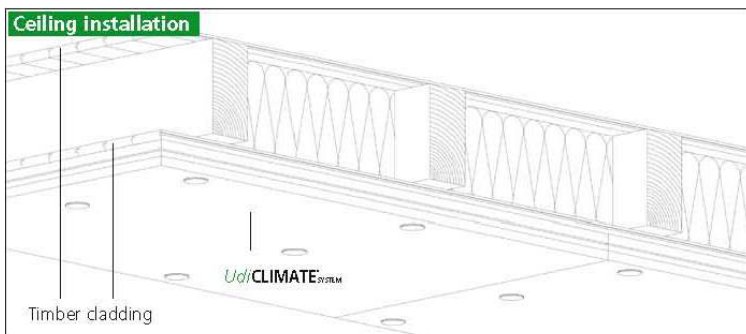
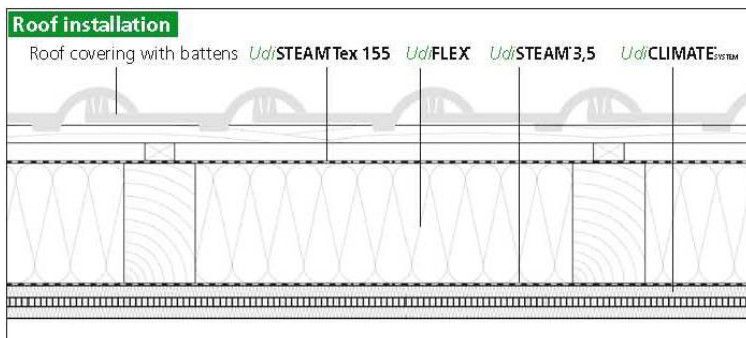
Dimensions	130 cm x 79 cm (other dimensions reserved)
Total thickness	30 / 60 mm (other dimensions reserved)
Weight	4 kg/m ² ... 16 kg/m ² dependent upon the installation thickness.

Wood-fibre insulation board

Apparent density	210 kg/m ²
Fire classification DIN 4102-1	B2
Euro class DIN EN 13501-1	E
Design value	0.049 W/(mK)
water-vapour diffusion resistance	5
German Institute for Building Technology -technical approval Z-23.15-1429	

Climate chamber element

Coefficient of thermal resistance	
15 mm: stationary air in the direction of the heat flow	0.15 m ² K/W
20 mm: stationary air in the direction of the heat flow	0.16 m ² K/W



Manufacturer:
Unger-Diffutherm GmbH
 Blankenburgstr. 81
 09114 Chemnitz (Germany)
 Tel: +49 (0) 371 - 81 56 40
 Fax: +49 (0) 371 - 81 56 4 64
 e-mail: info@unger-diffutherm.de

Both we and our specialist merchants are always happy to provide you with a personal service to answer any questions you may have. Don't hesitate to contact us.

backtoearth

natural building solutions

01363 866999 www.backtoearth.co.uk