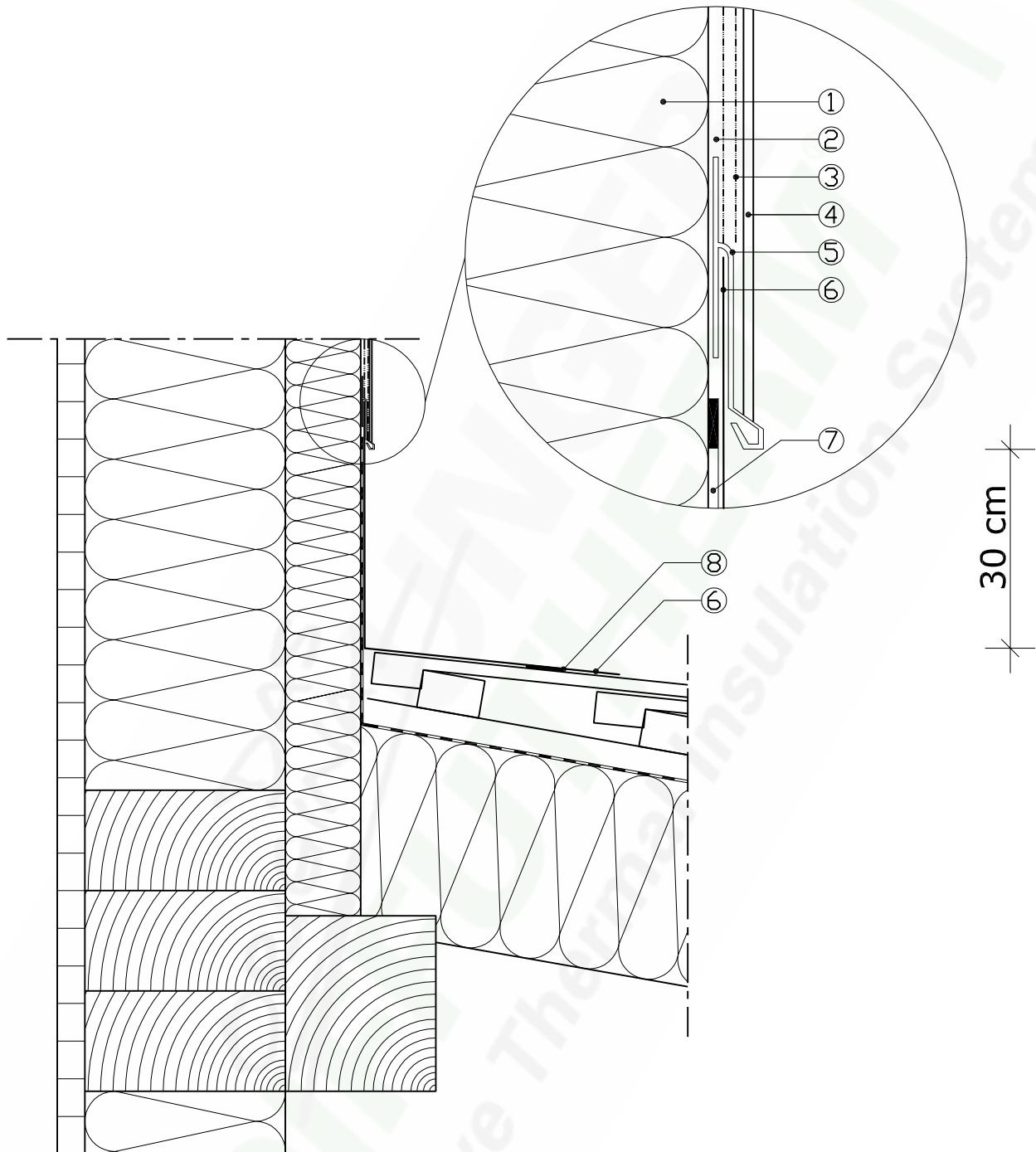


Installation on a rising wall with a sheet metal edging profile



1 - **Udi**UNGER DIFFUTHERM NF Wood-fibre insulation element

2 - **Udi**FOUNDATION COAT

3 - **Udi**REINFORCEMENT Strengthening Mesh

4 - **Udi**PERL Structured Fine Render

5 - **Udi**REINFORCEMENT Sheet Metal Edging Profile

6 - Sheet metal form-fitted profile

7 - Wind-proof membrane and water run-off layer.

Bonded to the wood-fibre insulation element using **Udi**DISPERSION ADHESIVE

8 - Adhesive bonding

Date: 28.08.2009

The technical information provided in this document reflects our current state of knowledge and experience. We reserve the right to make any changes we deem necessary to improve the product or its application and installation. The information contained within this document supersedes all previously dated documents and the information contained within them is herewith invalid.

NR 5.01

DAS ORIGINAL
UNGER
DIFFUTHERM
Innovative Thermal Insulation Systems