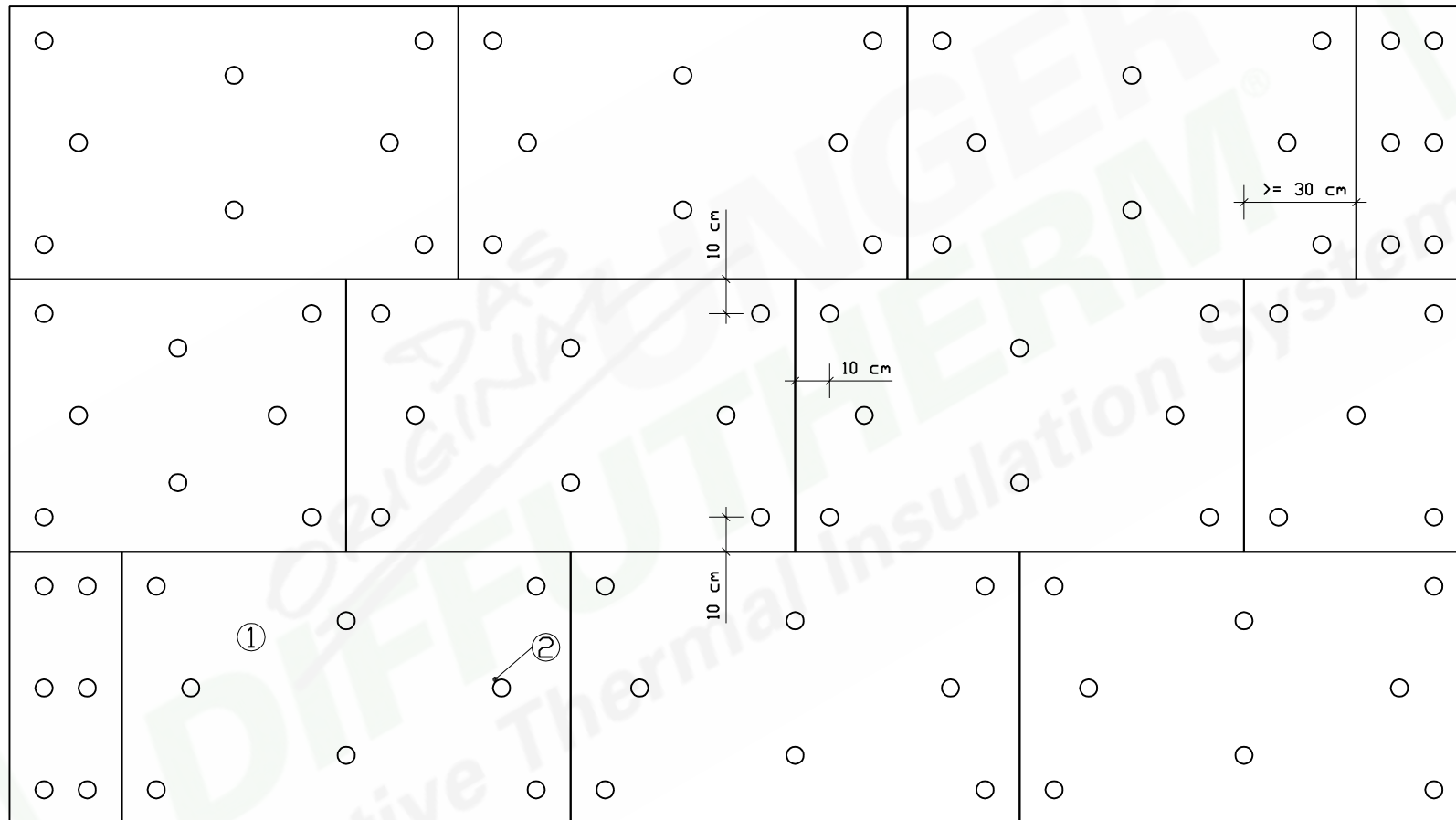


UdiIN RECO Fixing diagram



1 - UdiRECO Wood-fibre insulation element with integrated levelling compensation

2 - UdiMONTAGE SDH RECO (Timber) // UdiMONTAGE SDM RECO (Masonry)

Date: 07.06.2011

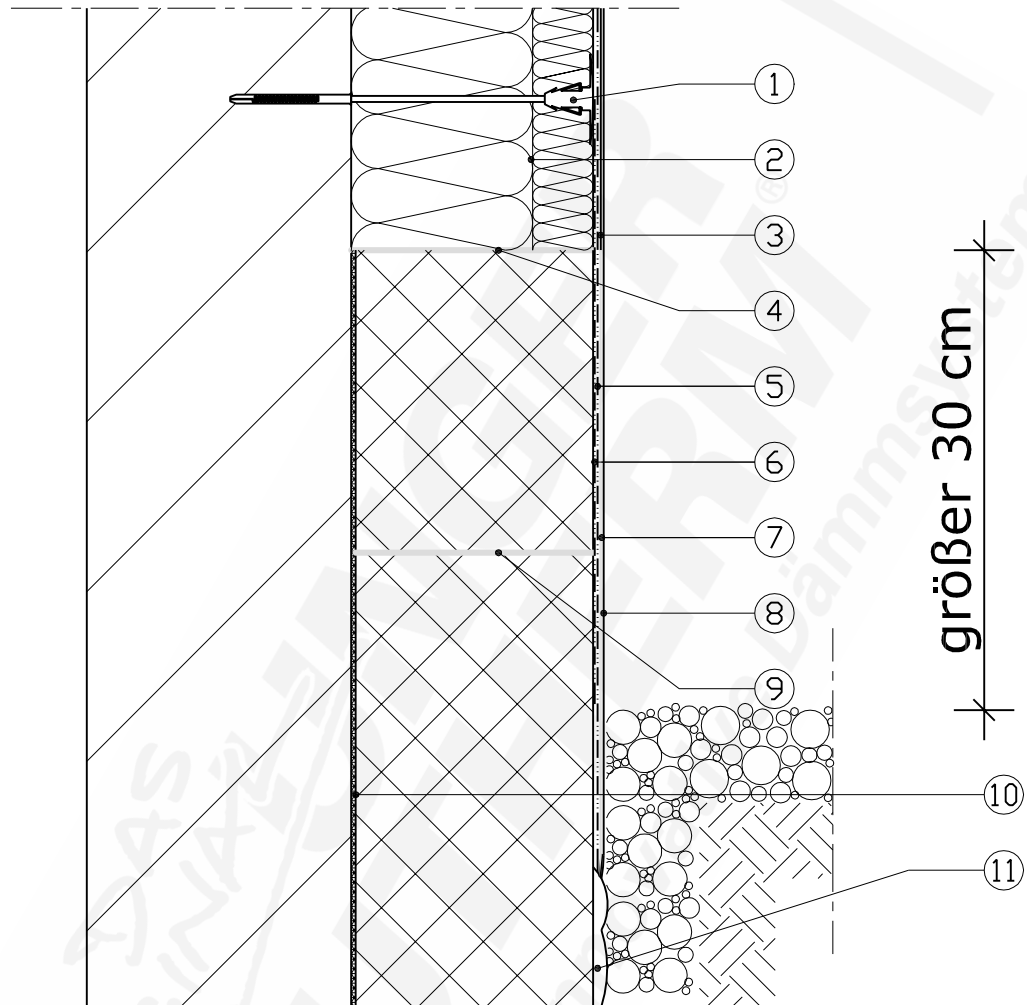
The technical information provided in this document reflects our current state of knowledge and experience. We reserve the right to make any changes we deem necessary to improve the product or its application and installation. The information contained within this document supersedes all previously dated documents and the information contained within them is herewith invalid.

NR 10.01



UdiRECO

- Plinth installation with a continuous/uninterrupted render coat -



1 - UdiMONTAGE SDM RECO

2 - UdiRECO Wood-fibre insulation element with integrated levelling compensation

3 - UdiFOUNDATIONCOAT

4 - Bonding using UdiDISPERIONADHESIVE

5 - UdiREINFORCEMENT Strengthening Mesh

6 - UdiREINFORCEMENT Strengthening Mesh Strip (30cm)

7 - UDI BASE Plinth Slurry

8 - UDI PERL Fine structured render system

9 - Bonding using UdiDISPERIONADHESIVE

10 - Bonding of the perimeter insulation

11 - e.g. Drainage element

Stand: 23.01.2009

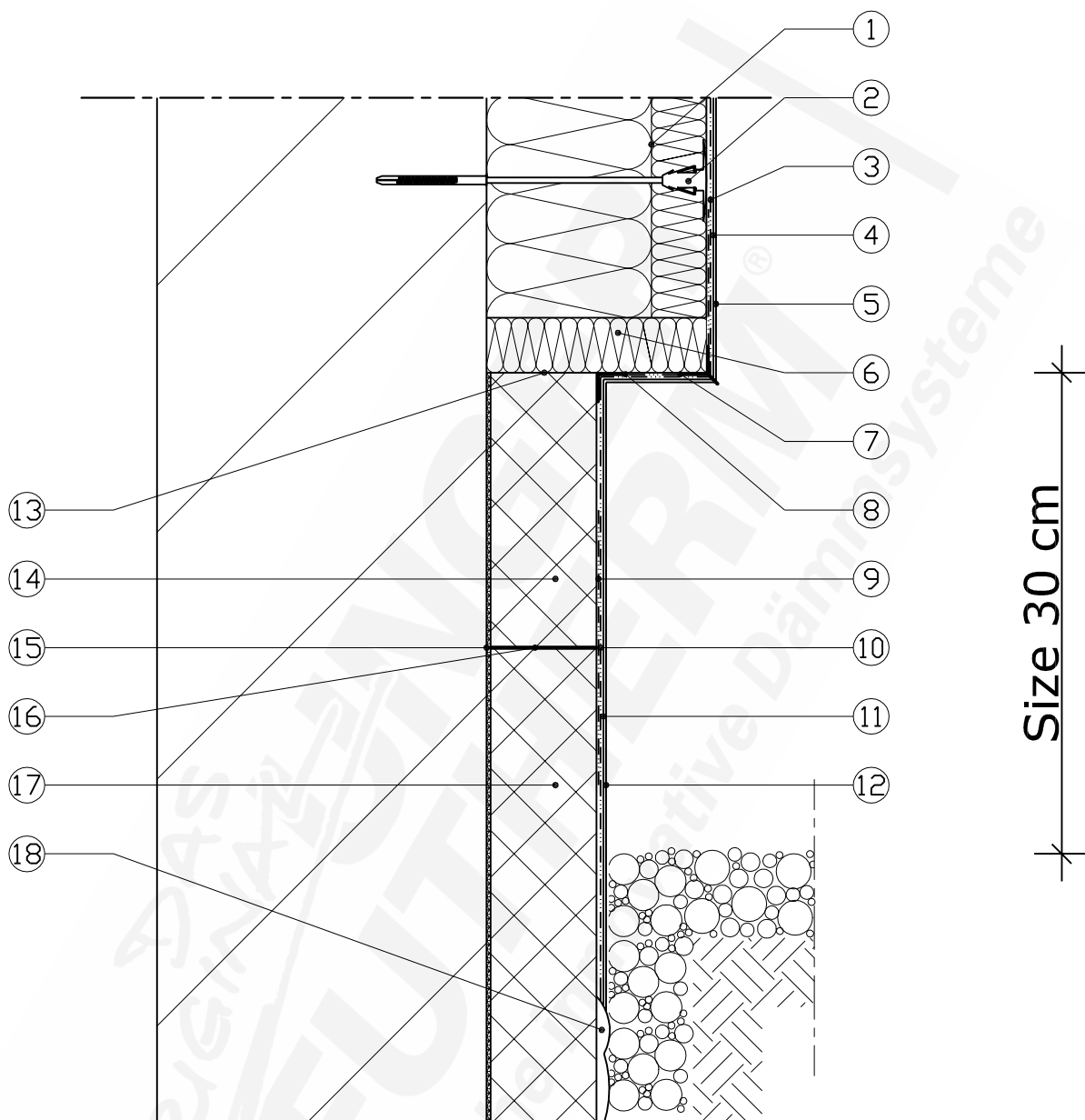
Dieses Detail entspricht unserem derzeitigen Kenntnisstand und derzeitigen Erfahrungen. Änderungen, die dem technischen Fortschritt und der Verbesserung der Detaillösung dienen, behalten wir uns vor. Mit Erscheinen dieses Details sind frühere Angaben ungültig.

NR 9.04



UdiRECO

- Plinth installation with a reveal/recess -



Size 30 cm

- | | |
|--|--|
| 1 - UdiRECO Wood-fibre insulation element with integrated levelling compensation | 10 - UdiREINFORCEMENT Strengthening Mesh |
| 2 - UdiMONTAGE SDM RECO | 11 - UdiFOUNDATION COAT - The surface is protected using UdiBASE Plinth Slurry |
| 3 - UdiREINFORCEMENT Strengthening Mesh | 12 - UdiPERL Fine structured render system |
| 4 - UdiFOUNDATIONCOAT | 13 - Bonding using UdiSPECIAL ADHESIVE |
| 5 - UdiPERL Fine structured render system | 14 - Perimeter insulation |
| 6 - UdiUNGER-DIFFUTHERM L Reveal board | 15 - Bonding of the perimeter insulation |
| 7 - UdiREINFORCEMENT Drip edge profile | 16 - Bonding using UdiSPECIAL ADHESIVE |
| 8 - UdiREINFORCEMENT Corner protection profile | 17 - Insulation below ground level |
| 9 - UdiREINFORCEMENT Strengthening Mesh (30cm Strip) | 18 - e.g. Drainage element |

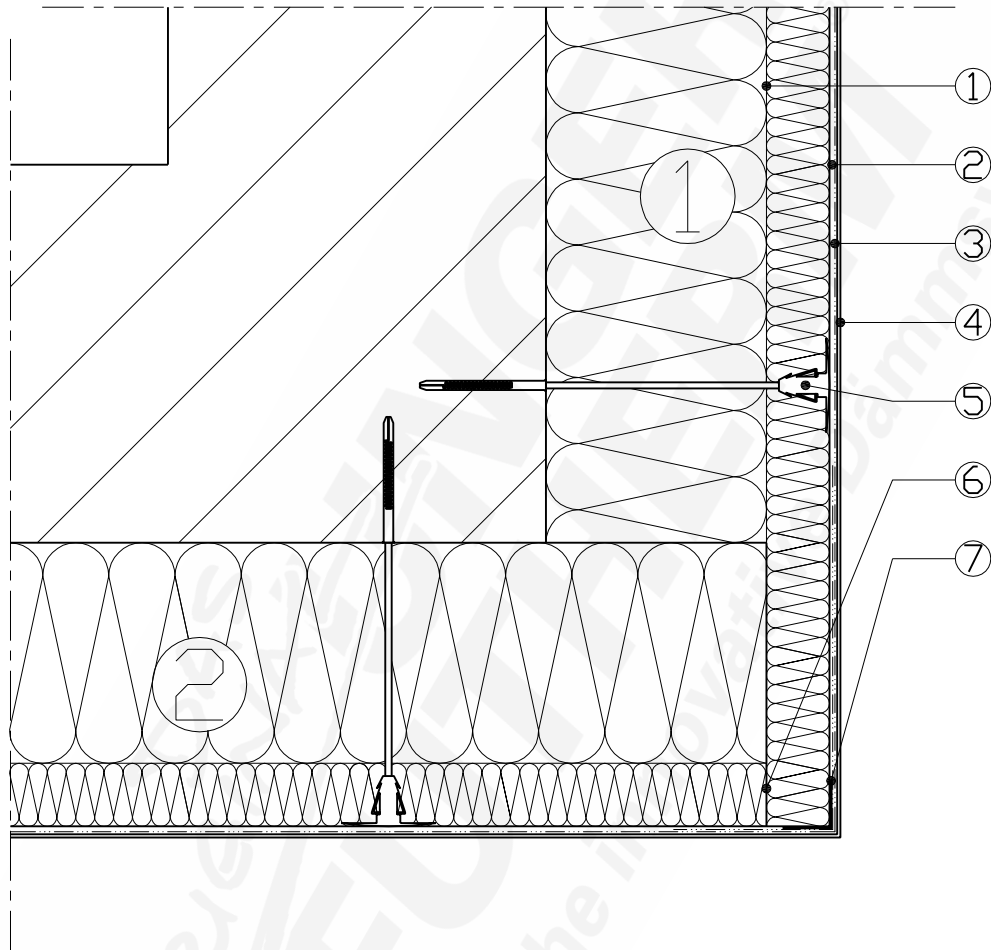
Stand: 20.03.2009

Dieses Detail entspricht unserem derzeitigen Kenntnisstand und derzeitigen Erfahrungen. Änderungen, die dem technischen Fortschritt und der Verbesserung der Detaillösung dienen, behalten wir uns vor. Mit Erscheinen dieses Details sind frühere Angaben ungültig.

NR 9.05



UdiRECO Corner installation



- 1 - UdiRECO Wood-fibre insulation element with integrated levelling compensation
- 2 - UdiFOUNDATIONCOAT
- 3 - UdiREINFORCEMENT Strengthening Mesh
- 4 - UdiPERL Fine structured render system
- 5 - UdiMONTAGE SDM RECO
- 6 - Sealing of joints using UdiSPECIALADHESIVE
- 7 - UdiREINFORCEMENT Corner protection profile

The first step is to mount board 1. The lower, wall-facing layer of the insulation which extends beyond the corner of the wall must then be removed, leaving only the top layer intact. Board 2 is then butted flush against board 1 to enclose the corner. When both boards have been fixed in their final positions, any overhang from the top insulation layer of board 1 which extends beyond the exterior surface of board 2 can be trimmed off to provide a flush finish.

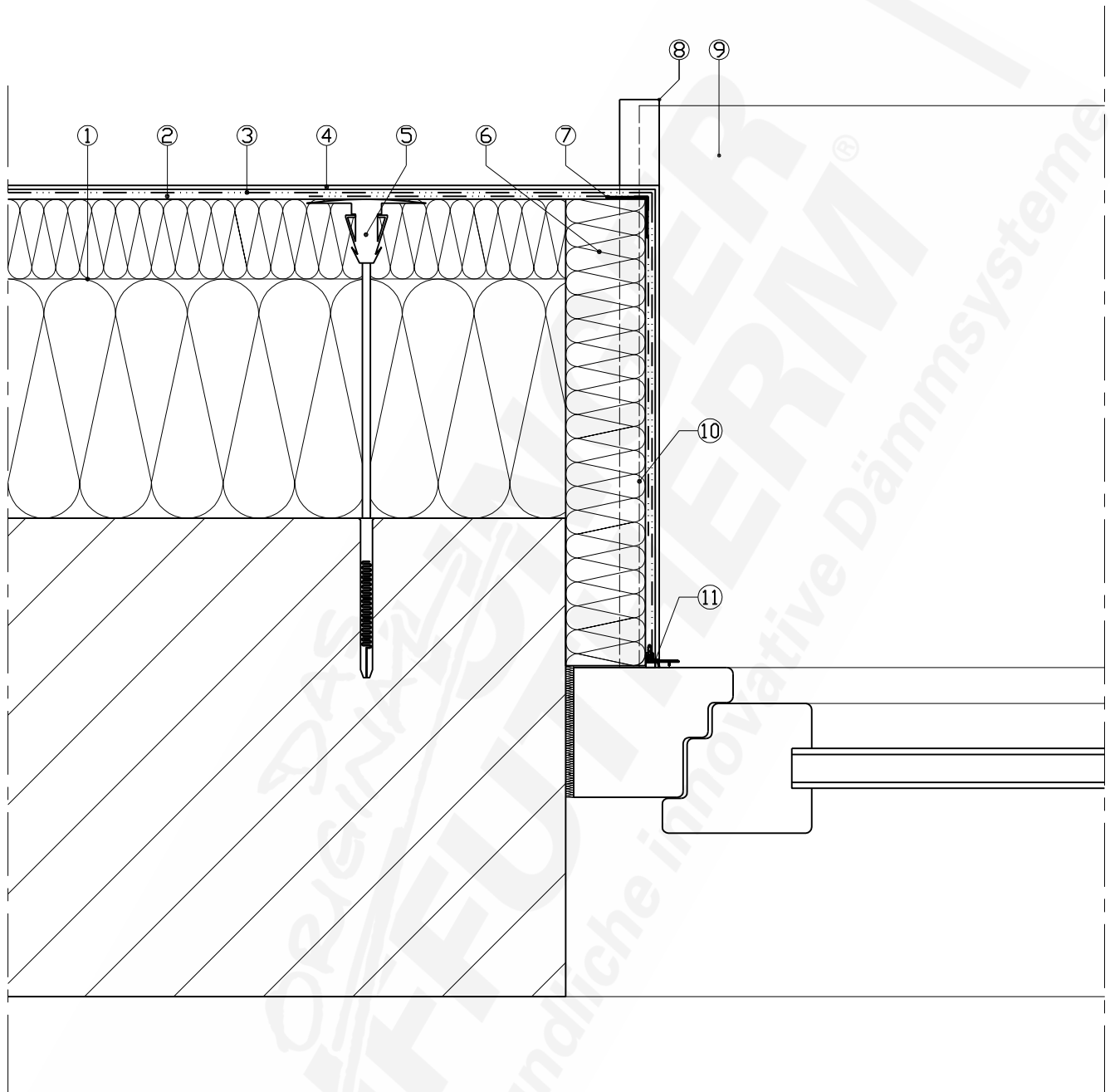
Stand: 13.03.2009

Dieses Detail entspricht unserem derzeitigem Kenntnisstand und Erfahrungen, Änderungen, die dem technischen Fortschritt und der Verbesserung der Detaillösung dienen, behalten wir uns vor. Mit Erscheinen dieses Details sind frühere Angaben ungültig.

NR 9.02



UdiRECO Window area installation - Masonry -



- 1 - UdiRECO Wood-fibre insulation element with integrated levelling compensation
- 2 - UDI FOUNDATION COAT
- 3 - UdiREINFORCEMENT Strengthening Mesh
- 4 - UdiPERL Fine structured render system
- 5 - UdiMONTAGE SDM RECO
- 6 - UdiUNGER-DIFFUTHERM L20 or L40 mm sealed with UdiSYSTEMADHESIVE
- 7 - UdiREINFORCEMENT Corner protection profile
- 8 - UdiALU Side Piece - expandable
- 9 - UdiALU Window sill

- 10 - UdiJOINTING TAPE
- 11 - UdiREINFORCEMENT Render edging strip LATE

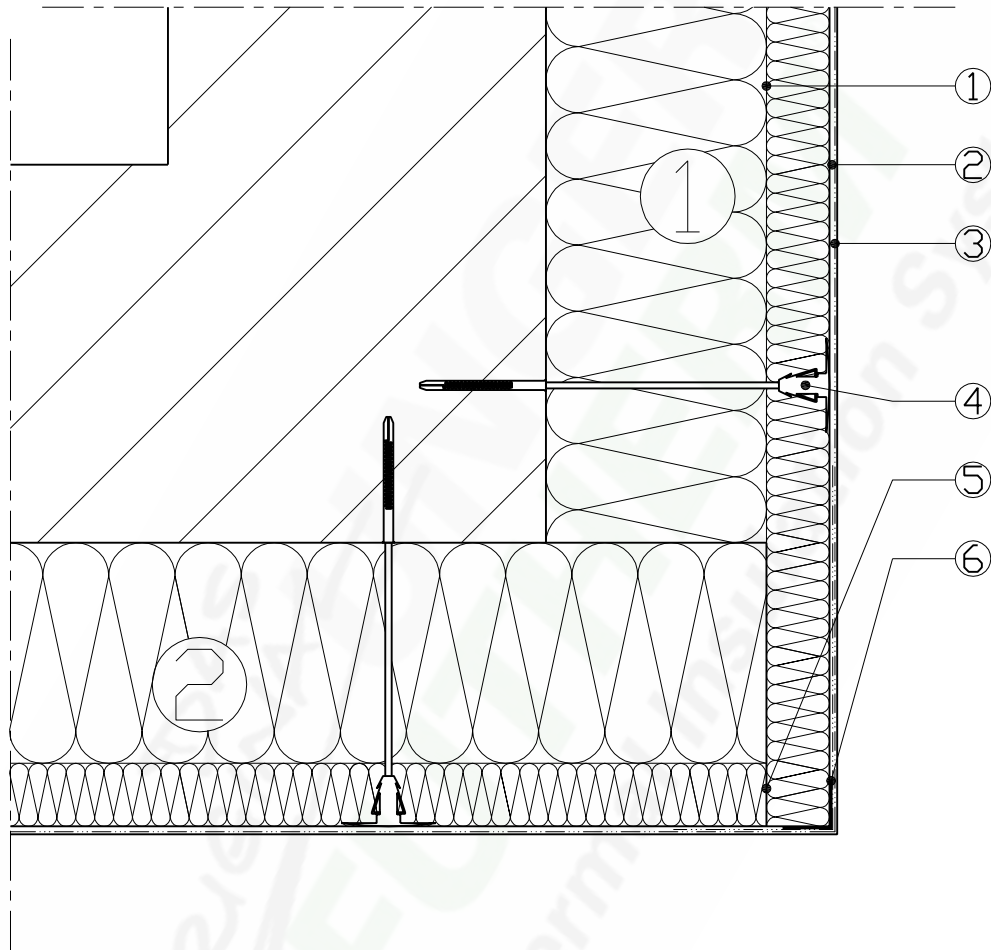
NR 9.03

Stand: 23.01.2009

Dieses Detail entspricht unserem derzeitigen Kenntnisstand und derzeitigen Erfahrungen. Änderungen, die dem technischen Fortschritt und der Verbesserung der Detaillösung dienen, behalten wir uns vor. Mit Erscheinen dieses Details sind frühere Angaben ungültig.



UdiIN RECO Corner installation



- 1 - UdiRECO Wood-fibre insulation element with integrated levelling compensation
- 2 - UdiMULTIGRUND Base Coat
- 3 - UdiREINFORCEMENT Strengthening Mesh
- 4 - UdiMONTAGE SDM RECO
- 5 - Sealing of joints using UdiSPECIALADHESIVE
- 6 - UdiREINFORCEMENT Corner protection profile

The first step is to mount board 1. The lower, wall-facing layer of the insulation which extends beyond the corner of the wall must then be removed, leaving only the top layer intact. Board 2 is then butted flush against board 1 to enclose the corner. When both boards have been fixed in their final positions, any overhang from the top insulation layer of board 1 which extends beyond the exterior surface of board 2 can be trimmed off to provide a flush finish.

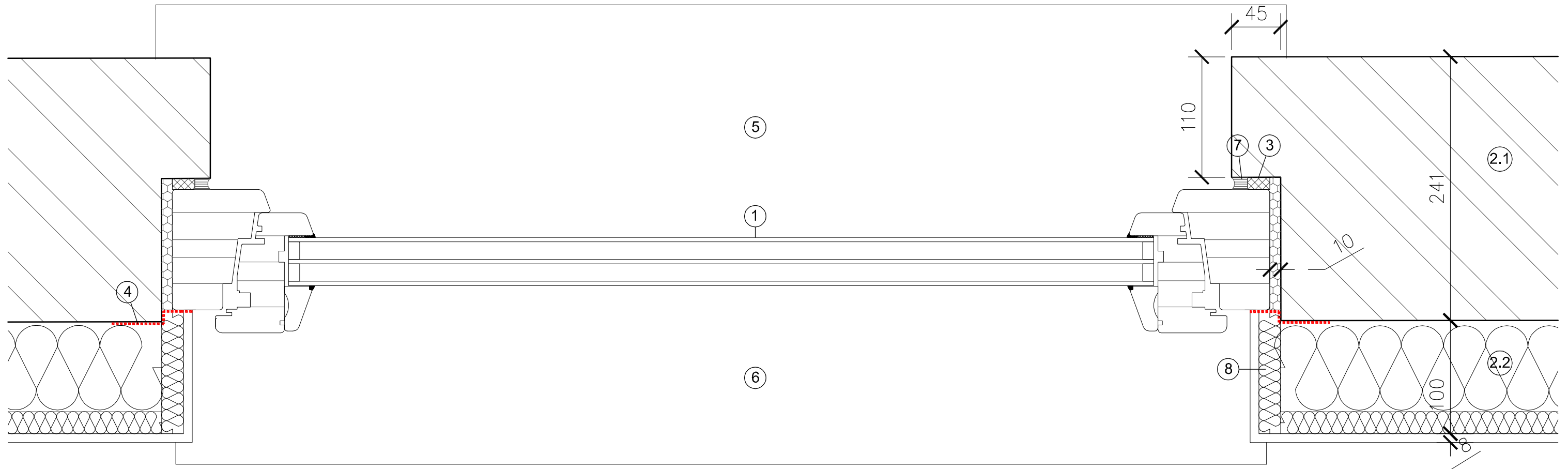
Date: 07.06.2011

The technical information provided in this document reflects our current state of knowledge and experience. We reserve the right to make any changes we deem necessary to improve the product or its application and installation. The information contained within this document supersedes all previously dated documents and the information contained within them is herewith invalid.

NR 10.02

DAS ORIGINAL
UNGER
DIFFUTHERM®
 Innovative Thermal Insulation Systems

UdiINRECO Window Plan Sample



2 - WALL CONSTRUCTION WITH INTERNAL INSULATION

2.1 - Existing brick wall (Wall treated externally with Hydrophobic primer, NBS M60/175. All existing internal plaster finishes removed)

2.2 - 100mm Udi INRECO Woodfibre insulation (NBS P10/208)

2.3 - 5mm UdiMULTIGRUND VCL Plaster (NBS P10/208) with UdiREINFORCEMENT mesh inlaid into plaster layer

2.4 - 2mm lime plaster skim coat (NBS M20/315)

NOTE: Do not apply lime plaster to areas to receive tile finish

2.5 - Paint (NBS M60/120) or tile finish (NBS M40)

3 - Comriband Sealing tape with expanding foam filling remaining opening

4 - NBS L10/815 Air Tightness tape

5 - Repair existing external concrete cills to master bedroom.

6 - NBS P20/116 New internal MDF painted window cill.

7 - Mastic between existing window reveal and new timber window frame.

8 - 20mm rigid insulation to overlap the window frame and provide an encap to the UdiINRECO board in preparation for receiving plaster finishes.