



UdiTOP[®] SYSTEM

UdiSPEED[®] SYSTEM

UdiFLEX[®]

UdiSYSTEM-INFORMATION 2010

UdiCLIMATE[®] SYSTEM

UdiIN[®] SYSTEM

UdiFRONT[®] SYSTEM

UdiRECO[®] SYSTEM



The Original UdiQuality Wood-fibre Insulation element

UdiUNGER-DIFFUTHERM® is the perfect insulation element against the cold as well as the hot weather. Suitable for direct rendering, it forms the basis for UNGER-DIFFUTHERM's tried and tested composite thermal insulation systems. These Building Inspectorate approved building products offer the customer a choice of **environmentally-friendly, innovative insulation solutions** combining improved living-quality with protection for our Mother Earth. The wood-fibre boards with a sandwich-layer construction, produced using a wet-manufacturing process, are complemented and optimised by our specially designed system components e.g. UdiPERL® SYSTEM STRUCTURED FINE RENDERS, UdiASSEMBLY® and UdiREINFORCEMENT® products - which are detailed below. Our systems provide comprehensive protection for every building: in summer you will really feel the benefits of the additional heat shield and on cold days its optimal thermal insulation qualities - providing you with a comfortable room climate all year round. Negative effects such as the build-up of condensation are eliminated due to its excellent construction-related characteristics in building physics.



Ecological and health promoting



Cost savings



Tested and certified



Universal spectrum



Top class moisture diffusion



Acoustic insulation

UdiUNGER-DIFFUTHERM® Wood-fibre insulation board

UdiFOUNDATION COAT®

UdiREINFORCEMENT® Strengthening mesh

UdiPERL® Primer

UdiPERL® Structured Fine Render

UdiPERL® Equalisation Paint (upon request)



THE ORIGINAL

*UdiQuality Insulation systems
keep working for a lifetime*

At the end of the 80's, we began the development of our insulation system based upon a special wood-fibre, sandwich-layer insulation board. This external wall insulation board was designed to be suitable for direct rendering and for use both internally and externally in timber-framed and masonry constructions. At the time many observers were sceptical. Today **we are leaders in our field in providing comprehensive protection** for your building's skin.



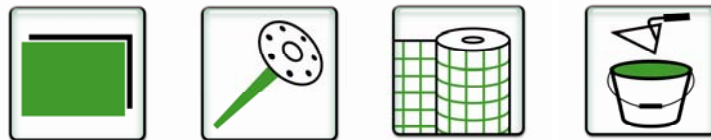
Around the time of the millennium, our company was able, in spite of numerous obstacles, to lay the foundation stone for its breakthrough into the insulation materials market and rang in an age of alternative thinking. The first Building Inspectorate general technical approval for a patented façade insulation system using wood-fibres was awarded to UNGER-DIFFUTHERM. We showed then and are still showing today how to comprehensively protect buildings. This is supported by the almost uncountable number of reference projects/buildings, encompassing new constructions, existing buildings and modernisations, throughout Germany and Europe.

UdiBASE® SYSTEM FOR THE BUILDING'S PLINTH AREA

UdiASSEMBLY® FIXINGS TIMBER | MASONRY

UdiREINFORCEMENT®

UdiPERL® SYSTEM STRUCTURED FINE RENDER



UdiUNGER-DIFFUTHERM® EXTERNAL THERMAL INSULATION COMPOSITE SYSTEMS

The UdiOriginal Unger-Diffutherm® External thermal insulation composite systems offer you many advantages:

- Cost efficient building method for both timber and masonry constructions
- The elimination of constructional errors
- Enables a complete vapour-permeable method of construction
- The active vapour-permeable properties allow the walls to 'breathe'
- Sound-proofing ≥ 54 dB without resonance effects in the timber frame structure
- Active capillary conductivity
- Stabilises the room climate
- Wind-proof due to the tongue and groove system
- The heat retention provides additional energy savings compared to the arithmetical u-value
- The exploitation of the sun's energy through its storage properties
- Flexible and adaptable to existing constructions due to the permanently elastic joints
- High level of value retention

Official German Building Inspectorate approval as an ETICS:

- Z-33.47-663 (Timber constructions)
- Z-33.43-204 (for solid masonry)
- Application pending for insulation thicknesses up to 200 mm
- pending for ETA (European Technical Approval)

Application – Timber-framed constructions



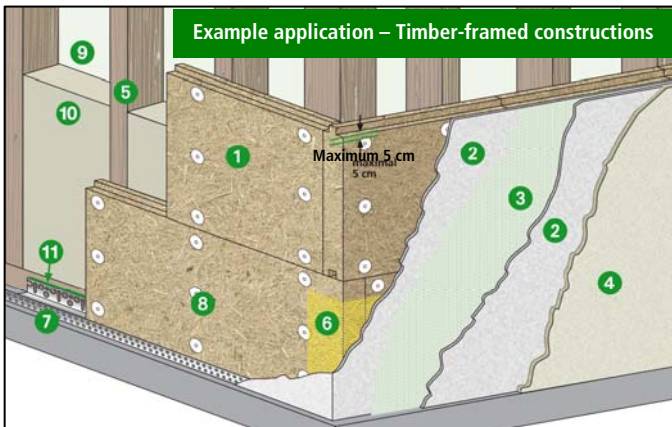
In terms of structural physics, this construction represents the most up-to-date technical standards. Almost all of the worst constructional mistakes caused by the build up of condensation can be eliminated. The stabilising effects of the natural moisture balance reduce the intrinsic movements of the timber.

An optimal solution.

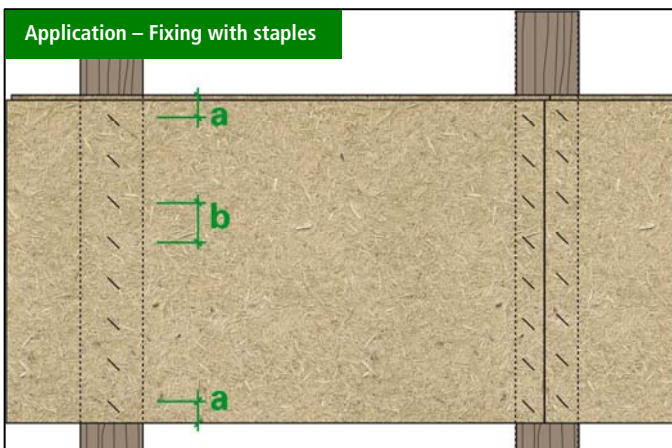
Special considerations

- As a rule, bracings can be transferred to the inside
- "Direct installation" on the timber studs with a maximum centre spacing of 62.5 cm for 60, 80, 100 mm
- Please refer to the current Building Inspectorate approval for centre spacing of 83.5 cm
- Blown-in insulation should be installed before the application of the **UdiFOUNDATION COAT®**

Timber-framed constructions in detail



- 1 **UdiUNGER-DIFFUTHERM® NF** Wood-fibre insulation board
- 2 **UdiFOUNDATION COAT®**
- 3 **UdiREINFORCEMENT®** Strengthening Mesh
- 4 **UdiPERL®** Structured Fine Render
- 5 Substrate: Timber framed construction for a "Direct installation"
- 6 **UdiREINFORCEMENT®** Corner Protection Profile
- 7 **UdiBASE®** Plinth-End Cap Profile with Plinth-Edging Strip
- 8 **UdiASSEMBLY®** Insulation Nail, **UdiASSEMBLY®** Insulation Render Screw or **UdiASSEMBLY®** Staples
- 9 Interior cladding, e.g. wood-based panels
- 10 Void insulation in timber-framed constructions
- 11 **UdiJOINTING TAPE®**



- a Distance from edge ≥ 30 mm
 - b Staple spacing ≈ 65 mm
- Angle of the staples: $\approx 30^\circ - 60^\circ$
 Number of staples per board: 8 pieces

When the joint between insulation elements is located directly on a timber stud, the position of the staples must be staggered slightly. Only staples made exclusively from stainless steel are used.

Further details and installation information are available in the internet under www.unger-diffutherm.com or per telephone under the Hotline **+49 (0) 371 81 56 40**. Guarantees, warranties or constructional and structural physics properties can only be guaranteed through the exclusive use of original Building Inspectorate approved Unger-Diffutherm System components.

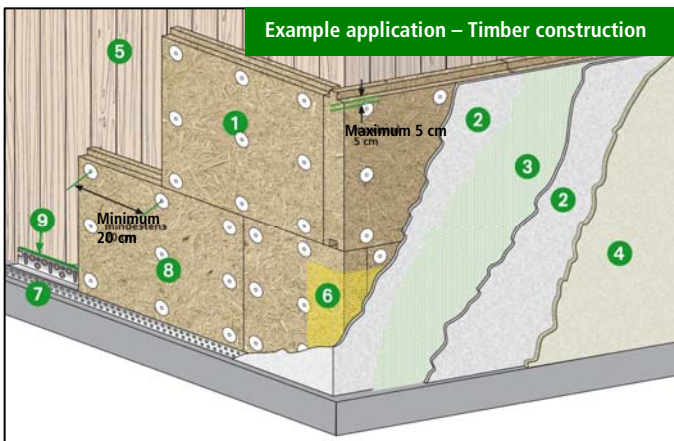
Application – Solid timber buildings

E.g. Composite timber -, HOMOGEN-, Steko- or Block-timber



In solid timber constructions, the **UdiUNGER-DIFFUTHERM®** Wood-fibre insulation elements promote the stabilisation of the natural moisture balance within the wood. This produces an extraordinarily pleasant room climate. As a rule, vapour barriers on the inside of external walls are unnecessary.

A solid timber construction in detail



- 1 **UdiUNGER-DIFFUTHERM®** NF Wood-fibre insulation board
- 2 **UdiFOUNDATION COAT®**
- 3 **UdiREINFORCEMENT®** Strengthening Mesh
- 4 **UdiPERL®** Structured Fine Render
- 5 Substrate: Composite timber, Block-timber, LIGNOTREND- or STEKO external walls to ensure the fixing of the insulation boards across the whole surface
- 6 **UdiREINFORCEMENT®** Corner Protection Profile
- 7 **UdiBASE®** Plinth-End Cap Profile with Plinth-Edging Strip
- 8 **UdiASSEMBLY®** Insulation Nail, **UdiASSEMBLY®** Insulation Render Screw or **UdiASSEMBLY®** Staples
- 9 **UdiJOINTING TAPE®**



- a** Distance from edge ≥ 30 mm
- b** Staple spacing ≈ 140 mm
- Angle of the staples: $\approx 30^\circ - 60^\circ$
- Number of staples per board: 16 pieces
- Penetration depth: ≥ 30 mm

Application – Masonry or mineral-based substrates



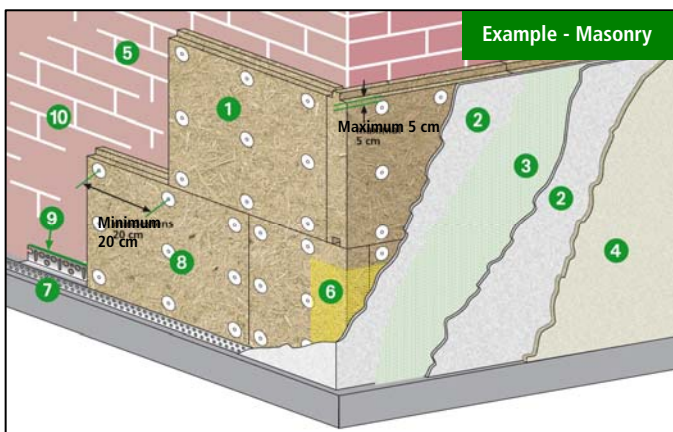
The insulation combines optimal structural physics properties:

- Active capillary conductivity without the use of vapour barriers
- Additional heat storage capacity of the natural wood fibres
- Outstanding sound-proofing due to the alternating densities of the sandwich layers

Special considerations

- The **UdiUNGER-DIFFUTHERM® NF** Wood-fibre insulation boards in the first row must be bonded to the masonry across their whole surface using **UdiFOUNDATION COAT®** in order to avoid rear draughts. The fixing system bears the load of the façade.
- All the other boards (except for the reveal boards) do not require adhesive bonding. At least 80% of the board's surface should however make contact with substrate.

A solid timber construction in detail



- 1 **UdiUNGER-DIFFUTHERM® NF** Wood-fibre insulation board
- 2 **UdiFOUNDATION COAT®**
- 3 **UdiREINFORCEMENT®** Strengthening Mesh
- 4 **UdiPERL®** Structured Fine Render
- 5 **UdiFOUNDATION COAT®**
- 6 **UdiREINFORCEMENT®** Corner Protection Profile
- 7 **UdiBASE®** Plinth-End Cap Profile with Plinth-Edging Strip
- 8 **UdiASSEMBLY®** Expanding Fixing or **UdiASSEMBLY®** Screw Fixing
- 9 **UdiJOINTING TAPE®**
- 10 Substrate: e.g. Brickwork to ensure the fixing of the insulation boards across the whole surface

Further details and installation information are available in the internet under www.unger-diffutherm.com or per telephone under the Hotline **+49 (0) 371 81 56 40**. Guarantees, warranties or constructional and structural physics properties can only be guaranteed through the exclusive use of original Building Inspectorate approved Unger-Diffutherm System components.

Application – Half-timbered constructions



Half-timbered structures benefit from the capillary conductivity of the **UdiFRONT® SYSTEM** Thermal insulation composite systems. The special construction of the **UdiUNGER-DIFFUTHERM® NF** Wood-fibre insulation elements ensures the highly effective insulation of the compartments/bays. The optimally matched system components enable a cost-effective, safe and secure, long-lasting and efficient installation. It is very important to follow the UNGER-DIFFUTHERM installation instructions precisely.

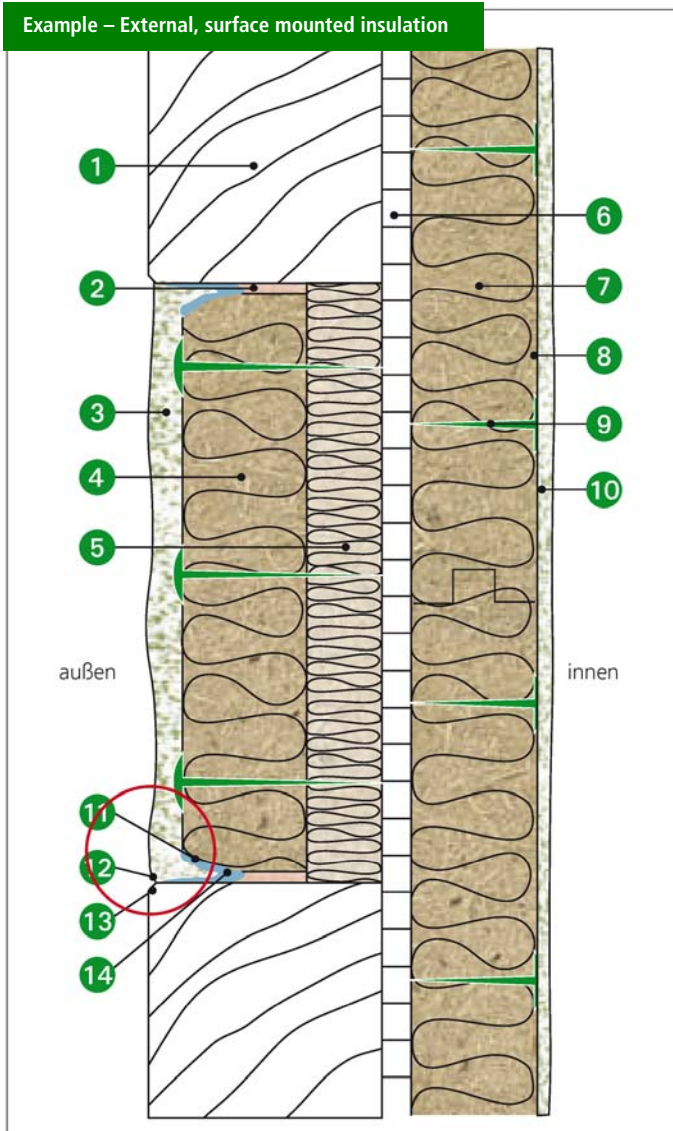
Special considerations

The adhesive bonding in the compartment/bay areas of half-timbered structures should be performed according to detailed specifications

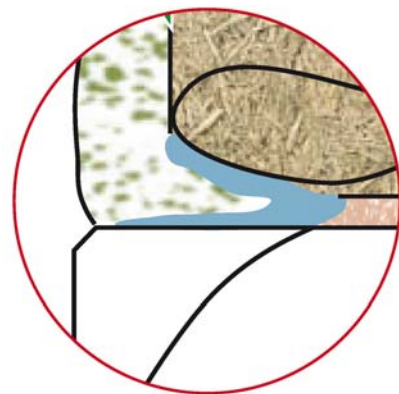
-> Available upon request

Half-timbered construction in detail

Example – External, surface mounted insulation



- 1 Half-timbered construction
- 2 Joints wadded with wood fibres or hemp and wedged
- 3 **UdiPERL® Structured Fine Render**
- 4 **UdiUNGER-DIFFUTHERM® NF** Wood-fibre insulation board
- 5 **UdiUNGER-DIFFUTHERM® SK** Wood-fibre insulation board
- 6 OSB or Livingboard Face
- 7 **UdiUNGER-DIFFUTHERM® NF** Wood-fibre insulation board
- 8 **UdiMULTIGRUND®** with **UdiREINFORCEMENT® Strengthening Mesh**
- 9 **UdiASSEMBLY® Insulation Render Screw**
- 10 **UdiPERL® Structured Fine Render**
- 11 45° Chamfer on the **UdiUNGER-DIFFUTHERM® NF** Wood-fibre insulation board
- 12 Trowel cut
- 13 45° Chamfer on the timber beam
- 14 **UdiDISPERSION ADHESIVE®**



IMPORTANT

Installation instructions

Non-conformance to the requirements of our systems may lead to invalidity of any guarantees and warranties! The individual characteristics of our insulation system product components have been tested and matched to complement one another and ensure their long-lasting functionality. The insulating efficiency, weather protection and fixing security can only be guaranteed through the exclusive use of our complete system!

Before beginning the insulation work, please note:

In new timber buildings any moisture accumulations caused, for example, through working with screeds, fillers or loam during the building process should be taken into consideration. In joint or connection areas (e.g. roof projections, drainpipes, window and door reveals, balconies and terrace floors etc.), the thickness of system layer(s) should be taken into consideration. Horizontal coverings and window sills should project at least 30 mm beyond the level of the finished surface. (It is important to calculate a 10mm allowance for the thickness of the render layer).

It is absolutely essential that all joints/connections are correctly dimensioned and perfectly sealed in order to exclude the ingress of driving rain and other forms of moisture behind the insulation boards. Any scaffolding should be fixed in place using extended anchoring eyes. Openings must be sealed weather-proof. Any existing building expansion joints must be integrated into our system. Substrates must be clean, dry and capable of bearing the weight of the installed system. Uneven surfaces should be filled and levelled using **UdiFOUNDATION COAT®**. Substrates subject to rising damp should be sealed using a damp course membrane or thoroughly dried out before starting work. Voids within the insulation layer should be avoided.

Before beginning the rendering work, please note:

Do not expose unprotected insulation boards to the effects of the weather for more than 60 days. Adjacent building elements (e.g. beams, windows, doors, penetrations and plinth profiles) should be sealed water- and wind-tight using **UdiJOINTING TAPE®** (front edge of the insulation board). The tolerance of the board surfaces is max. 1-2 mm. Board tolerances above these levels should be removed using an electric sander or grid plane. The fixings should be sealed using an appropriate filler.

The minimum working temperature during the installation and drying period is +5°C (air and substrate). Do not apply render in direct sunlight (plan according to the path of the sun) or when raining. Blown-in insulation must be installed before beginning with the rendering work.



Alterations, errors and omissions excepted. The Unger-Diffutherm GmbH general terms and conditions of trade and delivery of apply.

Installation Steps 1

1. Install insulation boards

The **UdiBASE® Plinth-End Cap Profile** (only in the case of an offset in the line of the building in the water splash/spray zone) is horizontally mounted and fixed in the plinth area using the **UdiBASE® ASSEMBLY Set**. The **UdiBASE® Plinth-Edging Strip** is then clipped on. The lower edge of the reinforcement mesh overlaps the mesh of the **UdiBASE® Plinth-Edging Strip**. The reinforcement mesh also overlaps the mesh of the corner protection profiles and the render edging strips by 10 cm.



The insulation boards are then tightly installed with the joints offset by at least 30cm. The boards can also be installed horizontally and laid and rendered on either side. On the corners of buildings the boards should preferably be installed in a cross bond formation. The **UdiUNGER-DIFFUTHERM®** Wood-fibre insulation boards are mechanically fixed using 9 pre-supplied **UdiASSEMBLY® Expanding Fixings** per board. In combination with a compressed air staple gun, these staples allow a simple and almost effortless installation of the **UdiUNGER-DIFFUTHERM®** Wood-fibre insulation boards. Recommended for timber-framed and solid timber constructions. Ideally suited for use in affixing the first insulation layer in double layer installations. Not suitable for use as insulation in the building's plinth or foundation areas. The lower edge of the insulation should be 30 cm above the final ground level. Suitable plinth insulation boards should be installed in this area.



Recommended quantity guidelines for both construction types **TIMBER**

Timber-frame construction: 6 Pcs/m²

Solid timber constructions: 9 pcs/m²

The choice of the correct plug/fixing and the length should be carefully checked before installing the insulation.

Compressed air staple gun

Recommended quantity guidelines for both construction types: 16 Pcs/m²

Recommended distance between staples: 3 cm < Distance < 10 cm

The correct staple length should be carefully checked before installing the insulation.

Installation Steps 2



Recommended quantity guidelines **MASONRY**

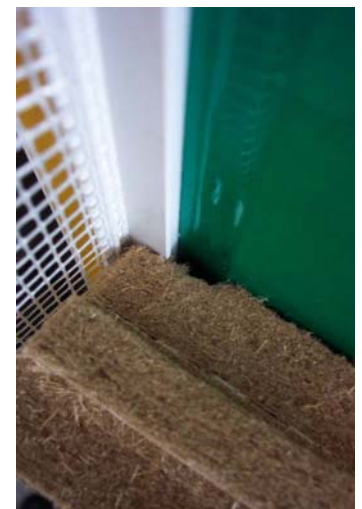
Exterior wall: 9 -10 Pcs/m²
Interior wall: 7 -10 Pcs/m²

Newly developed fixings with an extraction sealing mechanism for attaching the insulation boards to the foundation substrate; Available for timber and masonry substrates

Only the exclusive use of these special high-quality and technically approved fixing materials guarantees the long-term structural stability of the system!

2. Install the render edging strips

Stick the self-adhesive **UdiREINFORCEMENT® Render Edging Strips** (LATE or UNIVERSAL) to the window and door frames. It is important that these frames have been thoroughly cleaned and dried before starting work. An adhesion test should be performed beforehand in an inconspicuous area. Window frames that have a wax or silicon-based surface coating must be treated with a primer beforehand. In corner areas with a 90° angle, first install the horizontal and then the vertical strips. Only use complete strips not pieces.



UdiREINFORCEMENT Render Edging Strip LATE

Self-adhesive plastic strip with strengthening mesh. The design employs two interleaved telescopic profiles to compensate for movements. The ideal render termination strip for previously installed insulation boards.
New: with an UV-resistant protective lip

UdiREINFORCEMENT Render Edging Strip UNIVERSAL

Tried and tested self-adhesive plastic strip with strengthening mesh with a broad sticking surface for a permanent and rain-proof flexible joint.
New: with an UV-resistant protective lip

Installation Steps 3

3. Apply the foundation coat

Corners and edges should be formed flush and plumb using **UdiREINFORCEMENT® Corner Protection Profile**. A 5 mm layer (corresponds to 6.5 – 7,0 kg/m²) of **UdiFOUNDATION COAT®** should be applied using a 10mm toothed trowel. The **UdiREINFORCEMENT® Strengthening Mesh** should be bedded into the upper third of the still wet coating nearest the surface and smoothed with a stainless steel trowel. A mesh overlap of 10 cm across the edges of the whole surface should be maintained.



UdiREINFORCEMENT® Corner Strengthening Mesh is bedded-in above and below the corners of window and door openings. **UdiREINFORCEMENT® 3D Corner Strengthening Mesh 90 Degree** is also bedded-in but in this case only above the openings. The **UdiFOUNDATION COAT®** should then be smoothed flat with a stainless steel trowel (drying time 1 mm = 1 day). Cut edges (e.g. in the vicinity of scaffold anchors) must have a double layer of reinforcing mesh.



4. Top coat



Apply the pre-delivered
UdiPERL[®] SYSTEM – for our Guarantee system,
UdiMIRALO[®] SYSTEM – Mineral,
UdiSIKATO[®] SYSTEM – Silicate,
UdiORGATO[®] SYSTEM – Organic,
UdiSILANO[®] SYSTEM – Siliconic
Primer with a roller.

Test the viscosity of the structured fine render before starting with the application of the primer. It is recommended that a test area is allocated beforehand.

UdiFine Quality Renders (**UdiMIRALO**[®] SYSTEM – Mineral, **UdiSIKATO**[®] SYSTEM – Silicate, **UdiORGATO**[®] SYSTEM – Organic, **UdiSILANO**[®] SYSTEM – Silicon or our Guarantee system **UdiFRONT**[®] SYSTEM with **UdiPERL**[®] SYSTEM **Fine Quality Renders** with the **15 year guarantee package**) should be applied to dry primer and structured as quickly as possible using a plastic trowel.

Please note that appropriate primer must be used which corresponds to the particular render system chosen.

We recommend polyurethane compounds for the permanent sealing of joint areas. Acrylic- or silicon-based compounds are also suitable. These will however need to be subjected to subsequent maintenance checks.



UdiSERVICE

UdiDELIVERY

A growing network of decentralised **UdiSYSTEM MERCHANTS** in Germany and across Europe ensures a quick and professional delivery of the **UdiINSULATION SYSTEMS** and **UdiBUILDING PRODUCTS**.



UdiCONTACT

Under the telephone number **+49 (0) 371- 81 56 40** you can reach our team of UNGER-DIFFUTHERM-specialists who will be happy to answer your questions relating to **UdiINSULATION SYSTEMS** and **UdiBUILDING PRODUCTS**.



UdiPLANNING

UNGERDIFFUTHERM offers a complete service providing building physics expert knowledge and information on the statutory requirements relating to the insulation market. In order to help you calculate the material need for your project, UNGERDIFFUTHERM provides a continually updated calculation help program in the internet.



UdiTRAINING

In our training centre at the UNGER-DIFFUTHERM company HQ, our team offers a comprehensive training and education program for all interested parties such as architects, planners, energy advisors or tradesmen, developers, students or apprentices.



UdiGUARANTEE PACKAGE

We at Unger-Diffutherm are so convinced of the quality of our products that we offer a comprehensive guarantee package for the new **UdiINSULATION SYSTEMS**.

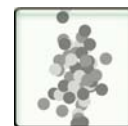
UdiMould-free-GUARANTEE®

UdiWarp-free-GUARANTEE®

UdiCrack-free-GUARANTEE®

UdiColour choice- GUARANTEE®

NEW 15 YEARS GUARANTEE



Over and above this, more than 45 thousand contented Unger-Diffutherm customers have insulated their buildings using **UdiINSULATION SYSTEMS** – without any health-related complaints. This has been possible due to the system's intelligent design and the careful selection of environmentally-friendly and ecological products which harmonise perfectly. The **UdiINSULATION SYSTEMS** have been scientifically tested and are subject to continuous strict quality controls.

UdiENVIRONMENT

Unger-Diffutherm insulation materials are manufactured from softwood fibres exclusively from renewable sources. In 1999 our façade insulation system was tested and recommended by the leading German ecological consumer magazine "Öko-Test" as the 'best in class' thermal insulation system. Unger-Diffutherm insulation materials are kind to the skin – both to the touch and when installing. All waste material and off-cuts can be disposed of or composted without any problems.

UdiARCHITECTS SEMINAR (70060)

1 Day-Theory-Introductory basic course

- Program:
- Argumentation help
 - Calculation training
 - Areas of application for UdiINSULATIONSYSTEMS
 - Handling and installation tips
 - The theory of dealing with special building features
 - Discussion and argumentation training

Who may take part?

Any interested architect, planner, energy advisor or tradesman e.g. carpenter, plasterer, painter, dry liner, loam building specialist or any other interested party e.g. developer, student or apprentice.

UdiLicencing (70065)

3 Day complete training course

- Program:
- Argumentation help
 - Calculation training
 - Areas of application for UdiINSULATIONSYSTEMS
 - Handling and installation tips
 - Dealing with special building features in timber and masonry buildings
 - Discussion and argumentation training
 - Practical session - Handling and installation tips

On the successful completion of the course, you will receive your own personal basic tool kit "First Kit".

The course includes refreshments on the seminar days, 3 nights accomodation and an evening function in the local town.

Only those who have paid their subscription fee in advance will be permitted to take part. Early registration is recommended.

Who may take part?

Any interested tradesmen e.g. carpenters, plasterers, painters, dry liners or loam building specialists. We recommend that carpentry firms and timber construction specialists should be accompanied by their "partner" painter or plasterer in order that they may gain a first-hand introduction to the system.



Article No.	Description	Unit	Net price in EUR
Udi ARCHITECTS SEMINAR 70060	1 Day-Theory-Introductory basic course	1 course	78,15
Udi RECO SEMINAR 70060	1 Day-Seminar on the correct processing of the new System UdiRECO	1 course	200,00
Udi LICENCING COURSE 70065	Licence to become a UdiCERTIFIED INSTALLER	1 course	1.277,31

UdiCALCULATION

We will prepare a complete and non-binding offer including building physics calculations for **UdiSYSTEMS** for your building. Please complete the following form and include a sketch of the cross-section of the wall(s) and send it us either by fax or by post. For window sills, please send us a separate request.

Contact person:.....
 Address:.....
 Post code, town, country:.....
 Telephone:.....
 GSM:

1. select insulation system

- UdiTOP® UdiIN® UdiCLIMATE®
- UdiFRONT® UdiRECO® UdiSPEED®
- UdiFLEX® UdiSTEAM® UdiARGILE®

2. Building

- Older /existing construction New construction
- Interior insulation Exterior insulation

Masonry type:

- Perforated bricks/blocks Solid bricks/blocks
- Mixed masonry

Timber construction

- Solid timber/Log built construction Timber frame/studs
- Pre-fabricated timber construction

Half-timbered

- External insulation Infill insulation

Other constructions.....

3. Required insulation thickness

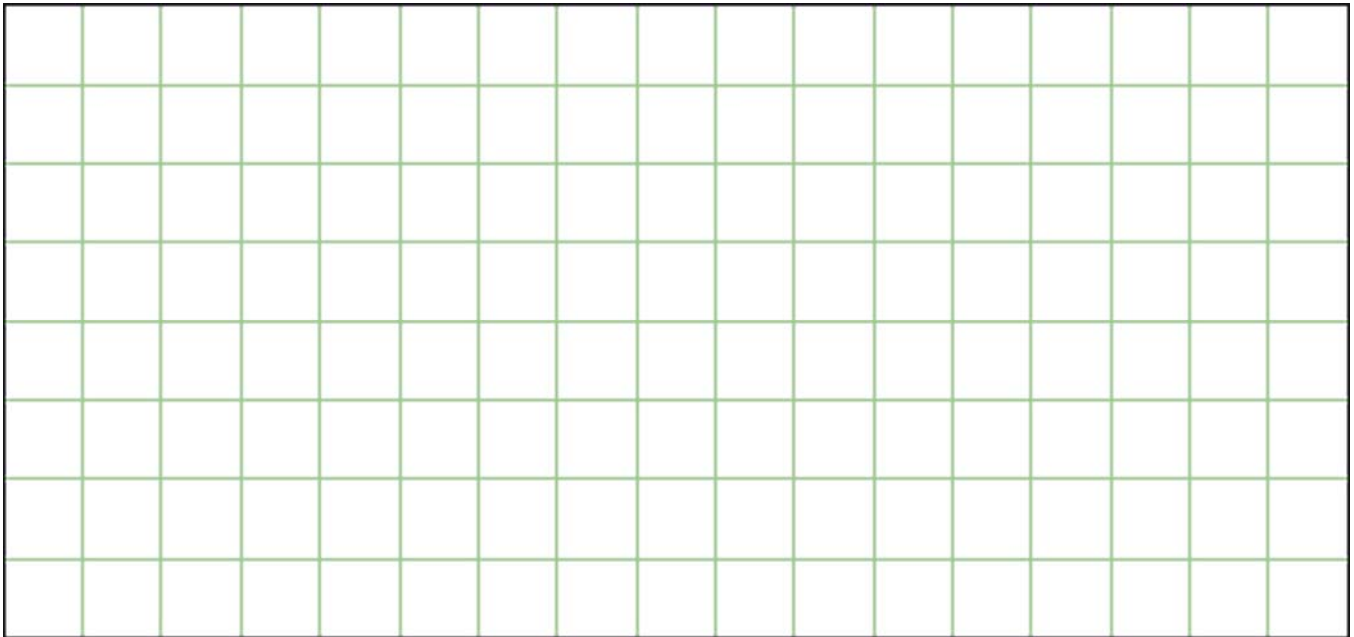
- 60 mm 80 mm 100 mm
- 120 mm 140 mm 160 mm
- 180 mm 200 mm mm according to recommendation

Insulation recommendation from UNGER-DIFFUTHERM requested (see my sketch on opposite page)

Developer:.....
 Address:.....
 Post code, town, country:.....
 Telephone:

4. Determination of quantity requirements

- Circumference of the building.....m
- Height to the eavesm
- Number of building corners Units
- Number of windowsUnits
- Number of doorsUnits
- Area to be insulated.....m²
including windows/doors
- Window aream²
- Door aream²
- Effective area to bem²
insulated without windows/doors
- Available space for window reveal insulation
 - 20 mm 40 mm 60 mm
 - 80 mm 100 mm
- Window reveal depthcm
- Total length of window reveals/lintelm
(without window sill)
- Total length of door reveals/lintelm
(without doorstep)
- Total length of window sill areasm
- Total roof slope length from ridge to wall plate.....m
- Effective area to be rendered.....m²



5. Surface / final coating

- UdiPERL® Fine plaster system
- Scratched surface structure Granularity.....mm
- Rubbed surface structure Granularity..... mm
- Smooth plaster
- UdiLOAM® Fine plaster system (for interior use, coloured)
- UdiPERL® Fine quality facade paint

6. Paint/colour

- UdiCOLOR® SYSTEM.....
- Special paint/colour.....

7. Special options

- External cladding in brickwork design
Desired colour
.....
- UdiPROTECT® Electrosmog shielding system
- UdiALU® Aluminium-Window sills
- uncoated dark anodised
- silver anodised RAL-coated 9016 (withe)

8. Installers and merchants

- Adresses of licensed UdiCERTIFIED INSTALLERS
- up to 100 km radius
- more than 100 km radius
- Adresses of UdiSYSTEM MERCHANTS
- up to 100 km radius
- more than 100 km radius

9. Contact

- prompt technical telephone support
- technical field service with on-site advisory service

10. Training

- Seminar participation Theory
- Seminar participation Practice

11. My comments

.....

 Town, Date.....
 Signature **X**.....



We're there where you need us!

Due to the ever growing demand for our high-quality and proven insulation systems, we have been able to build up a widespread network of system merchants. This means you can count on a quick and punctual direct on-site delivery.

Our system merchants stock the complete range of Unger-Diffutherm System components. For express deliveries, our reliable freight logistics partners and parcel services are waiting to serve. Don't hesitate to ask for a list of all outlets stocking Unger-Diffutherm products.

If you would like to become an Unger-Diffutherm system merchant, we would be happy to hear from you.



We are always happy to provide you with a personal service to answer any technical questions you may have.

You can reach us Mon – Fri from 7.30 – 18.00 CET (except public holidays) under the **Hotline +49 (0) 371 81 56 40**

Manufacturer Address :

Unger-Diffutherm GmbH

Blankenburgstr. 81
 09114 Chemnitz (Germany)
 Telefon +49 (0) 371-81 56 40
 Telefax +49 (0) 371- 81 56 4-64
 eMail info@unger-diffutherm.de



If you would like to visit Unger-Diffutherm GmbH in Chemnitz

By car ...

... travelling from the north of Germany
 From Hanover on the A 2 motorway to the Magdeburg junction (Kreuz Magdeburg). Then take the A 14 motorway towards Dresden to the Nossen junction (Kreuz Nossen), follow the A 4 motorway towards Erfurt and turn off at the exit for Chemnitz Glösa
 From Berlin on the A 9 motorway to the Schkeuditzer junction (Schkeuditzer Kreuz). Then take the A 14 motorway towards Dresden to the Nossen junction (Kreuz Nossen), follow the A 4 motorway towards Erfurt and turn off at the exit for Chemnitz Glösa
 take the A 13 motorway to the Dresden junction (Kreuz Dresden), follow the A 4 motorway towards Erfurt and turn off at the exit for Chemnitz Glösa

... travelling from the south of Germany
 From Munich via Nuremberg on the A 9 motorway to Hof. Take the A 72 motorway towards Chemnitz and then the A 4 motorway towards Dresden and turn off at the exit for Chemnitz Glösa

From Stuttgart and Ulm via the A 6 motorway towards Nuremberg. Take the A 9 motorway to Hof. Take the A 72 motorway towards Chemnitz and then the A 4 motorway towards Dresden and turn off at the exit for Chemnitz Glösa

... travelling from the west of Germany
 From Frankfurt and Cologne continue on the A 4 motorway towards Erfurt and Dresden. Turn off at the exit Chemnitz Glösa

By train ...

... travelling from the north of Germany
 Connections via Bremen or Hamburg, Hanover, Leipzig or Rostock, Berlin, Leipzig

... travelling from the south of Germany
 Connections via Stuttgart, Mainz, Frankfurt, Leipzig or Munich, Augsburg, Nuremberg

... travelling from the west of Germany
 Connections via Cologne, Frankfurt, Leipzig or Trier, Saarbrücken, Mannheim, Frankfurt, Leipzig

... travelling from the east of Germany
 Connections via Görlitz, Dresden or Berlin, Leipzig

By plane ...

... from all destinations via the airports Altenburg, Erfurt, Dresden or Leipzig



Udi General terms and conditions of trade and delivery

In so far as no other conditions are stipulated within these terms and conditions, the current versions of the following documents serve as the legal framework for the provision of our goods and services: • The German Construction Contract Procedures Parts B and C, • The relevant DIN-regulations. (German Industrial Standards), • The German Commercial Code for parties engaged in commercial activities. • The German Civil Code for parties not normally involved in commercial trading activities.

§ 1 Conditions governing contracts and quotations

Our general terms and conditions together with our written order confirmation are binding for all contracts. All written agreements contained within the order confirmations which deviate from our standard terms and conditions shall take precedence. These general terms and conditions also apply to subsequent orders. Any contractual terms requested by the contracting party which deviate from our standard terms and conditions require our express written approval. This approval is granted on an individual case by case basis. All verbal arrangements require our written confirmation in order to be valid. Offers and quotations are available upon request. In the case that sketches or designs are not available, our offer will be based upon our previous experience and guidelines. The requirement for any quantities, as stated within our quotation, should be verified on site by the contracting party before confirming the order. All offers/quotations are binding for a period of three months from the date of the offer/quotation. Special agreements are specified in the offer.

§ 2 Material characteristics

The material-specific characteristics of the goods supplied may vary from those of our samples. These variations do not represent grounds for reclamation of the goods, in so far as the functionality of the materials supplied is provided. We reserve the right to restrict the reparation to the contracting party, in connection with defects in the materials supplied, to our choice of a price reduction, a replacement delivery or the re-working of the materials originally supplied. More extensive claims, such as those arising from a delay, breach of contract or other grounds, are waived. All obvious and/or recognizable defects or short or incorrect deliveries must be notified immediately in writing before processing or installation. All remaining requirements relating to commercial parties, as per §§ 377, 378 of the German Commercial Code, remain unaffected.

§ 3 Delivery periods

Delivery periods begin with the date of dispatch of the order confirmation, not however before the client has furnished us with any documents, authorizations, approvals or pre-payments which are required by us. If the client provides the materials, the delivery period does not begin until the materials have been delivered. The delivery periods agreed upon will be observed to the furthest extent possible. In the case of unforeseen difficulties, such as force majeure, operational disturbances involving our own suppliers, strikes, lockouts, transport difficulties or due to material defects, the agreed delivery periods will automatically be extended by an appropriate and reasonable duration. Partial delivery is permitted. Delivery periods may likewise be extended if insufficient payments have been received for goods previously delivered.

No liability can be accepted for claims for damages resulting as a consequence of such delays.

§ 4 Return of goods

Returned goods will only be accepted if this option has been agreed prior to delivery; the goods are in a factory-new condition, and if so delivered, still in their original packaging. The client returning the goods is responsible for paying any transport costs incurred. Specially produced materials, such as dyed fine renders/plasters, paints and primers or old stock which is more than half a year old, cannot be accepted and will not be refunded. The arrangements for the return shipment are subject to the agreement of the parties concerned. We reserve the right to a commodity value reduction of 10-50% depending upon the condition of the returned commodity.

§ 5 Retention of title

The goods we deliver remain our property until all of the payment obligations from the mutual business relationship have been fulfilled. The buyer may only sell, process, and install the goods within the context of the normal course of business. The buyer may not pawn them or convey them for security purposes and must immediately notify us of any seizures or third-party interventions. The buyer is to store our reserved goods separately and sufficiently identify them as our property. In the event of assembly, processing or installation, we are the owner of the new article or total commodity and/or co-owner in proportion to the invoice amount for the reserved goods, to the sum of the invoice amount for all third-party goods involved. It is agreed that the buyer will safeguard the wares, at no cost to us, in exchange for the handover of the goods. The buyer hereby assigns to us all claims that it has secured against third parties from the sale of our reserved goods, no matter how this took place. If we are entitled to co-ownership of the commodity sold, then only the part of the claim that corresponds to the portion of the invoice amount is assigned to us. The buyer still remains entitled to collect on this claim for us in trust. The buyer's right to access the reserved goods and to collect the assigned claims expires if there is a failure to comply with the terms of payment, due to a bill of payment or cheque protest or because of suspension of payment. In these scenarios, we are entitled to take possession of the reserved goods. The buyer is to bear the resulting costs. The contract is only cancelled in the event of acceptance of returned goods and only when this is stated expressly. We are then entitled to collect on the claims assigned to us and to report that the transfer has taken place. The buyer has to communicate the name and address of the customer concerned as well as the amount of the claim and must make available to us all documents needed to enforce it. When the securities for our claims exceed 20%, the buyer can require that we release further securities.

§ 6 Transport and liability

The transport of the shipment takes place at the supplier's own risk and expense. The transfer of liability takes place when the shipment leaves our company headquarters. When the delivery is made directly to the building site, it is assumed that passable delivery routes are available for lorry transport class 2. The unloading of the lorry/carrier at the building sites may be agreed upon at an extra cost. Costs which arise because of transport routes that lorries/carriers cannot take or because of storage areas located too far from the building site will be borne retrospectively by the buyer.

§ 7 Prices and payments

All prices quoted are ex works - including packaging and excluding shipment - plus value added tax in accordance with the relevant regulations of the supply and service country. Changes to the fundamentals of the offer will lead to price adjustments. All quotations are based upon the unit price, which is binding, even if a total price is mentioned in the offer. All prices are based on the production costs at the time the offer is made. In the event that there is an increase in costs due for example to material price changes, the right to a price adjustment remains reserved. The payment period commences with the date of invoice.

We reserve the right to demand advance payment(s) and /or make changes to the payment conditions.

In the event of a delay in payment, penalty interest will be levied on the outstanding amount at a rate of 3% above the relevant bank rate of the German Federal Bank. Any authorized direct debit payment transfers, which can not be honoured by the buyer, will be subject to penalty charges.

Authorizations granted by the buyer to the seller for the regular collection of invoice amounts are effective until revoked by the buyer, in accordance to an agreed and fair period of notice. The off-setting of payments against counter-claims is only admissible if the claim against which this offset is to be made is undisputed or legally effective.

§ 8 Objections

Objections and complaints relating to the correctness or characteristics of the materials supplied must be notified upon delivery and/or collection and before the commencement of assembly. All notifications of defects must be stated in writing. We reserve the right to restrict the reparation to the contracting party for defects in the materials supplied, to our choice of either a replacement delivery or the re-working of the materials originally supplied. If it is not possible to inspect a defect or if this would require a disproportionately high effort, we are at liberty to refuse to do so. In the event that the reworking fails to achieve the desired result, the buyer can demand a price reduction. In all other cases, the options of a price reduction, the replacement of goods supplied, their substitution by other goods or the conversion of the sum, relating to the goods already supplied, into a credit note or other form of financial liability of the seller in respect of the buyer, are excluded. Claims for damages can only be asserted against us if the alleged damage(s) has/have been caused intentionally or through gross negligence. If a shipment arrives in a damaged state, then the recipient is obliged to have this confirmed by the carrier or parcel service prior to acceptance.

§ 9 Copyright and software use

Independent of any legal copyright protection, our documents are not to be copied either digitally or in print form nor be made accessible to third parties for reproduction. In addition, imitations that only deviate slightly in form and measurements are not permitted. If software is included in the scope of the delivery, the buyer is granted a non-exclusive right to use the software supplied, including its documentation. It is supplied for use with the delivery article for which it is intended. The software may only be used on one system. The buyer may only copy, edit or translate the software or change the software object code in the source code to the extent that is legally permissible (§§ 69 a ff German Copyright Act). The buyer commits themselves to refrain from removing or changing manufacturer data, in particular copyright notices, without the prior express agreement of the supplier. If the order is carried out in accordance with the buyer's designations, the buyer agrees to exempt us from any claims arising due to possible copyright infringements.

§ 10 Choice of law; Location of fulfillment; Court of jurisdiction

All contracts and agreements are subject to the law of the Federal Republic of Germany. The German language version of the contract provisions is binding. In the event of any dispute or diversity of interpretation, the German language version shall prevail. The standard purchase laws do not apply. The location of fulfillment of the contract is D 09114 Chemnitz, Germany. The court of jurisdiction shall be agreed as the relevant responsible court in Chemnitz, Germany.

§ 11 Partial invalidity

The invalidity of one of the previously stated terms or conditions does not imply or cause the remaining provisions of the agreement to be invalid and the remainder of the contract remains valid. The previously stated terms or conditions also apply to sales contracts and other contracts agreed with parties who are not normally involved in commercial trading activities. This provision is subject to the following condition: if the previously stated terms or conditions are in conflict with the mandatory legal regulations of the General Terms and Conditions Act, these legal regulations shall take precedence.

January 2008

Unger-Diffutherm offers you top quality wood-fibre insulation systems:

UdTOP[®] SYSTEM
The complete program for your roof

UdIN[®] SYSTEM **15 YEAR GUARANTEE**
The ecological interior insulation system

UdFRONT[®] SYSTEM **15 YEAR GUARANTEE**
The proven insulation system for tomorrow, available today

UdSPEED[®] SYSTEM
The efficient render-bearer insulation board system for timber buildings

UdRECO[®] SYSTEM
A new exterior insulation system- specially designed for uneven surfaces

UdCLIMATE[®] SYSTEM
The interior insulation system with integrated climate chambers

UdIN RECO[®] SYSTEM **NEWLY DEVELOPED**
A new interior wood-fibre insulation system - specially designed for uneven surfaces



Both we and our specialist merchants are always happy to provide you with a personal service to answer any questions you may have. Don't hesitate to contact us.



Unger-Diffutherm GmbH
 Blankenburgstr. 81
 D - 09114 Chemnitz (Germany)
 Telephone: +49(0) 371-81 56 40
 Telefax +49(0) 371- 815 464
 eMail: info@unger-diffutherm.de