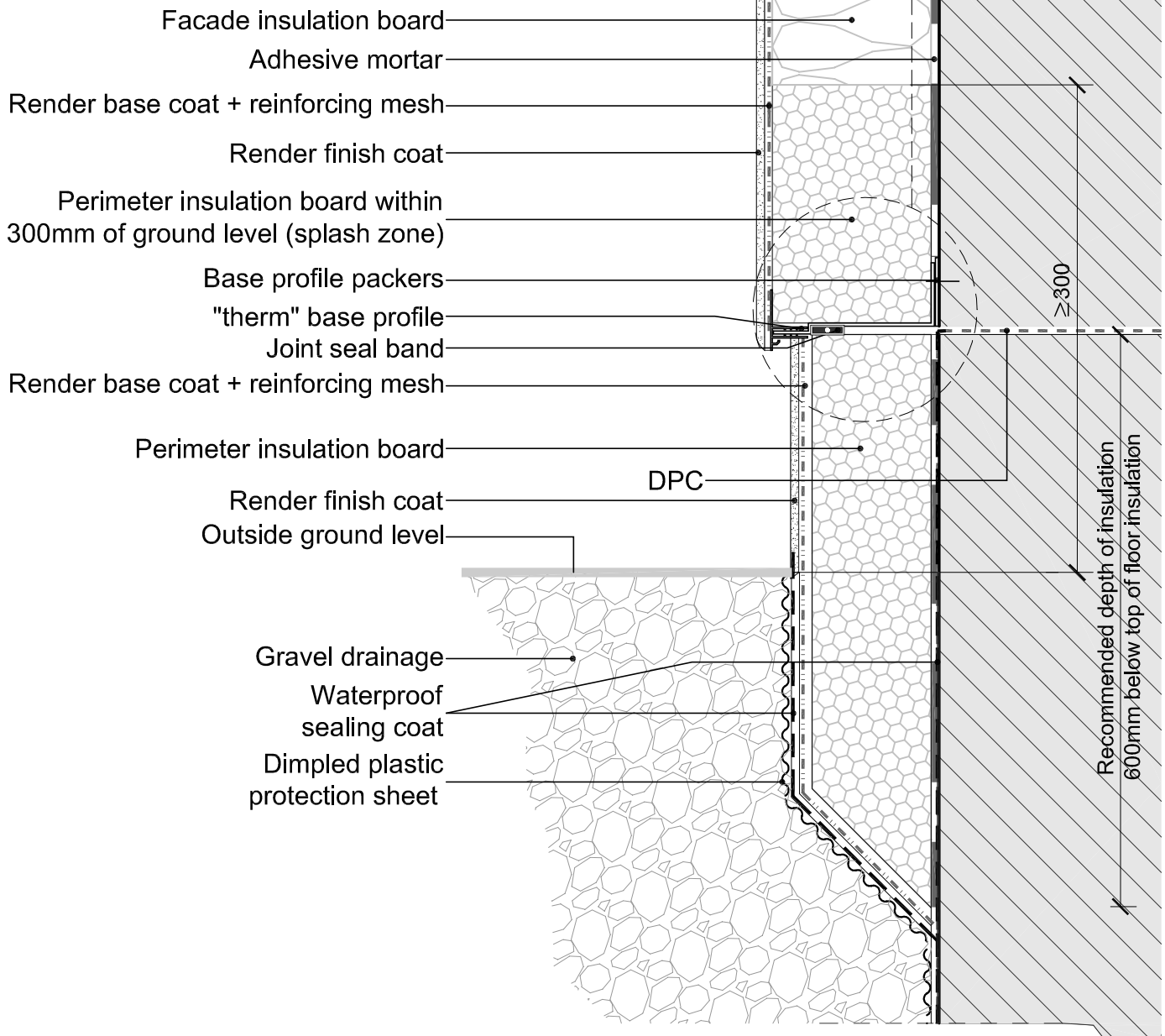
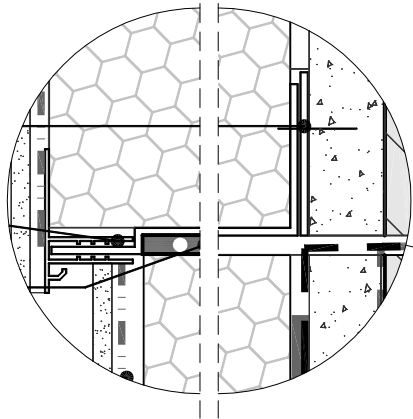


**BAUMIT EXTERNAL WALL INSULATION SYSTEM
INDEX OF DETAILS**

A	PLINTH AND PERIMETER INSULATION	TYPE	STAGE	REVISION
A 1.10	INSULATED PLINTH	DETAIL SECTION	NEW CONSTRUCTION	
A 2.10	INSULATED PLINTH	DETAIL SECTION	REFURBISHMENT	
A 2.11	BASE BEAD	DETAIL SECTION	REFURBISHMENT	
B	WALL AND DOOR CONNECTIONS	TYPE	STAGE	REVISION
B 1.10	WINDOW HEAD	DETAIL SECTION	NEW CONSTRUCTION	
B 1.11	WINDOW SILL	DETAIL SECTION	NEW CONSTRUCTION	
B 1.12	WINDOW REVEAL	DETAIL PLAN	NEW CONSTRUCTION	
B 1.13	WINDOW SILL	ISOMETRIC VIEW	NEW CONSTRUCTION	
B 2.10	RECESSED WINDOW HEAD	DETAIL SECTION	REFURBISHMENT	
B 2.11	RECESSED WINDOW SILL	DETAIL SECTION	REFURBISHMENT	
B 2.12	RECESSED WINDOW REVEAL	DETAIL PLAN	REFURBISHMENT	
B 2.13	RECESSED WINDOW SILL	ISOMETRIC VIEW	REFURBISHMENT	
C	ROOF CONNECTIONS	TYPE	STAGE	REVISION
C 1.10	EAVES	DETAIL SECTION	NEW CONSTRUCTION	
C 1.11	LEAN-TO ROOF	DETAIL SECTION	NEW CONSTRUCTION	
C 2.10	EAVES	DETAIL SECTION	REFURBISHMENT	
C 2.11	LEAN-TO ROOF	DETAIL SECTION	REFURBISHMENT	
D	MOVEMENT JOINTS	TYPE	STAGE	REVISION
D 1.10	MOVEMENT JOINT	DETAIL SECTION	NEW CONSTRUCTION	
D 1.11	MOVEMENT JOINT	DETAIL PLAN	NEW CONSTRUCTION	
D 2.10	MOVEMENT JOINT	DETAIL SECTION	REFURBISHMENT	
D 2.11	MOVEMENT JOINT	DETAIL PLAN	REFURBISHMENT	
E	GENERAL INSTALLATION	TYPE	STAGE	REVISION
E 1.10	SERVICE PIPE CONNECTION	DETAIL SECTION	NEW CONSTRUCTION	
E 2.10	SERVICE PIPE CONNECTION	DETAIL SECTION	REFURBISHMENT	
F	FIRE BREAKS	TYPE	STAGE	REVISION
F 1.11	FIRE BARRIER / CONTINUOUS FIRE BREAK	DETAIL SECTION / ISOMETRIC VIEW	NEW CONSTRUCTION	
F 2.10	FIRE FIXING	DETAIL SECTION	REFURBISHMENT	
F 2.11	FIRE BARRIER	DETAIL SECTION	REFURBISHMENT	
F 2.12	FIRE BARRIER / CONTINUOUS FIRE BREAK	DETAIL SECTION / ISOMETRIC VIEW	REFURBISHMENT	



Note: 1. Location and level of dpc and footpath to be established during survey.
 Project specific design to ensure that dpc is not compromised.

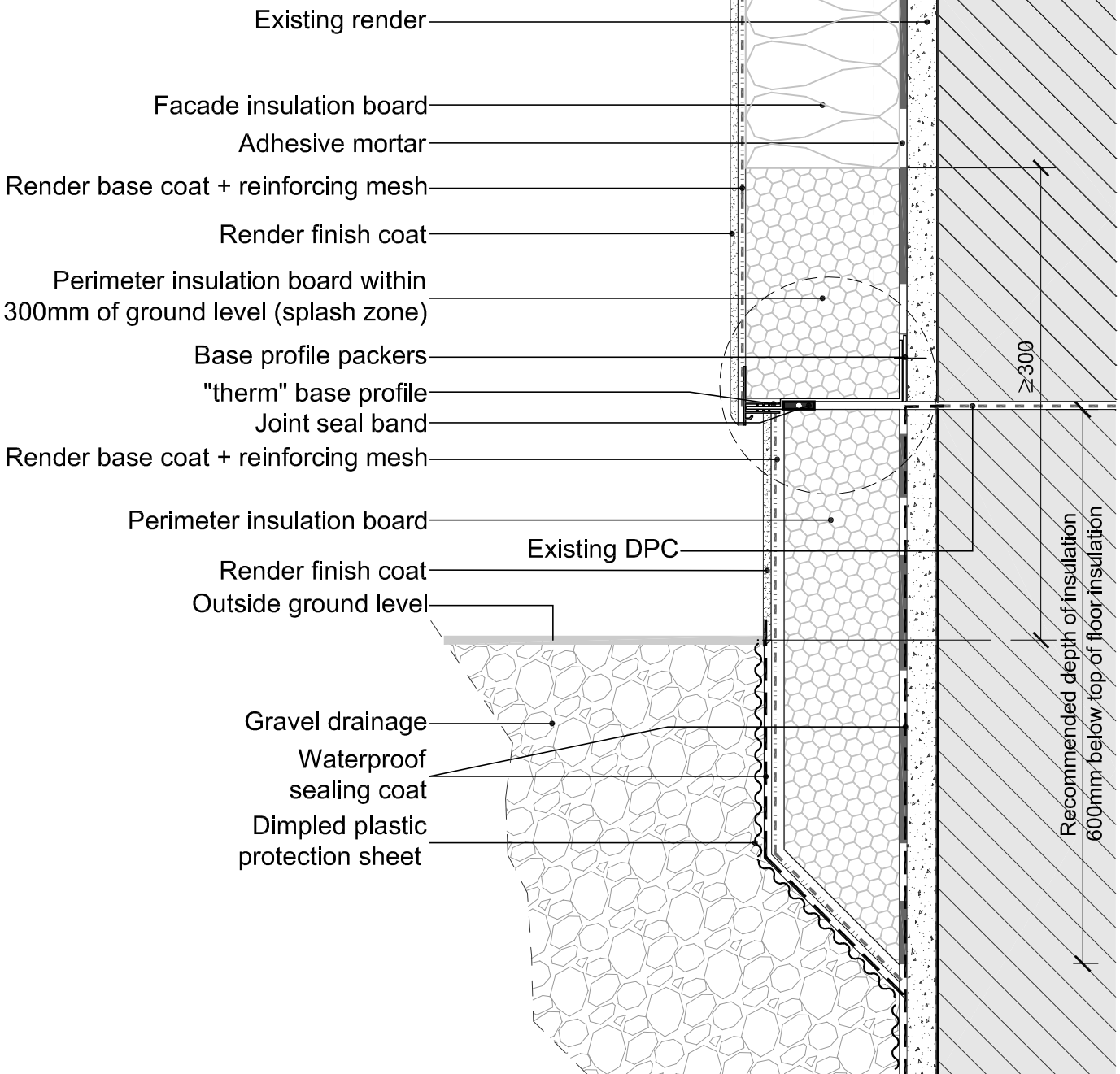
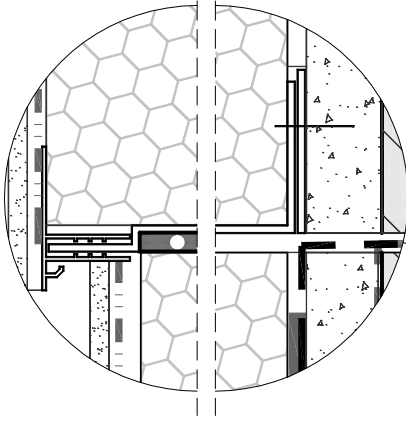
Baumit UK Ltd
 4200 Waterside Centre
 Solihull Parkway
 Birmingham B37 7YN
 Tel: +44 (0)121-717 4843
 www.baumit.co.uk

BAUMIT EXTERNAL WALL INSULATION SYSTEM

Drawing
 INSULATED PLINTH
 DETAIL SECTION

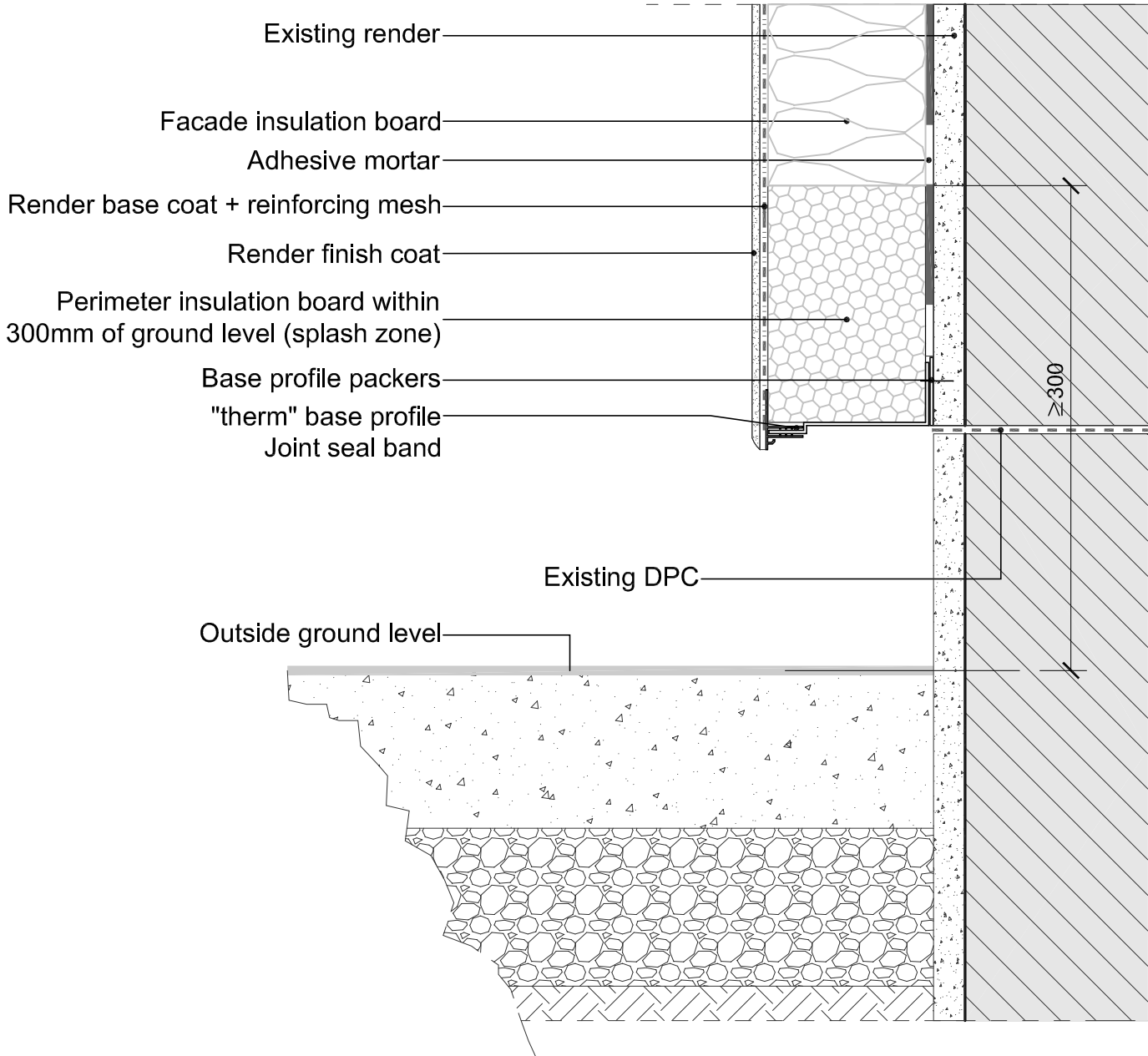
Stage
 NEW CONSTRUCTION

No.
 A 1.10
 Rev.
 1
 Date
 08/2009



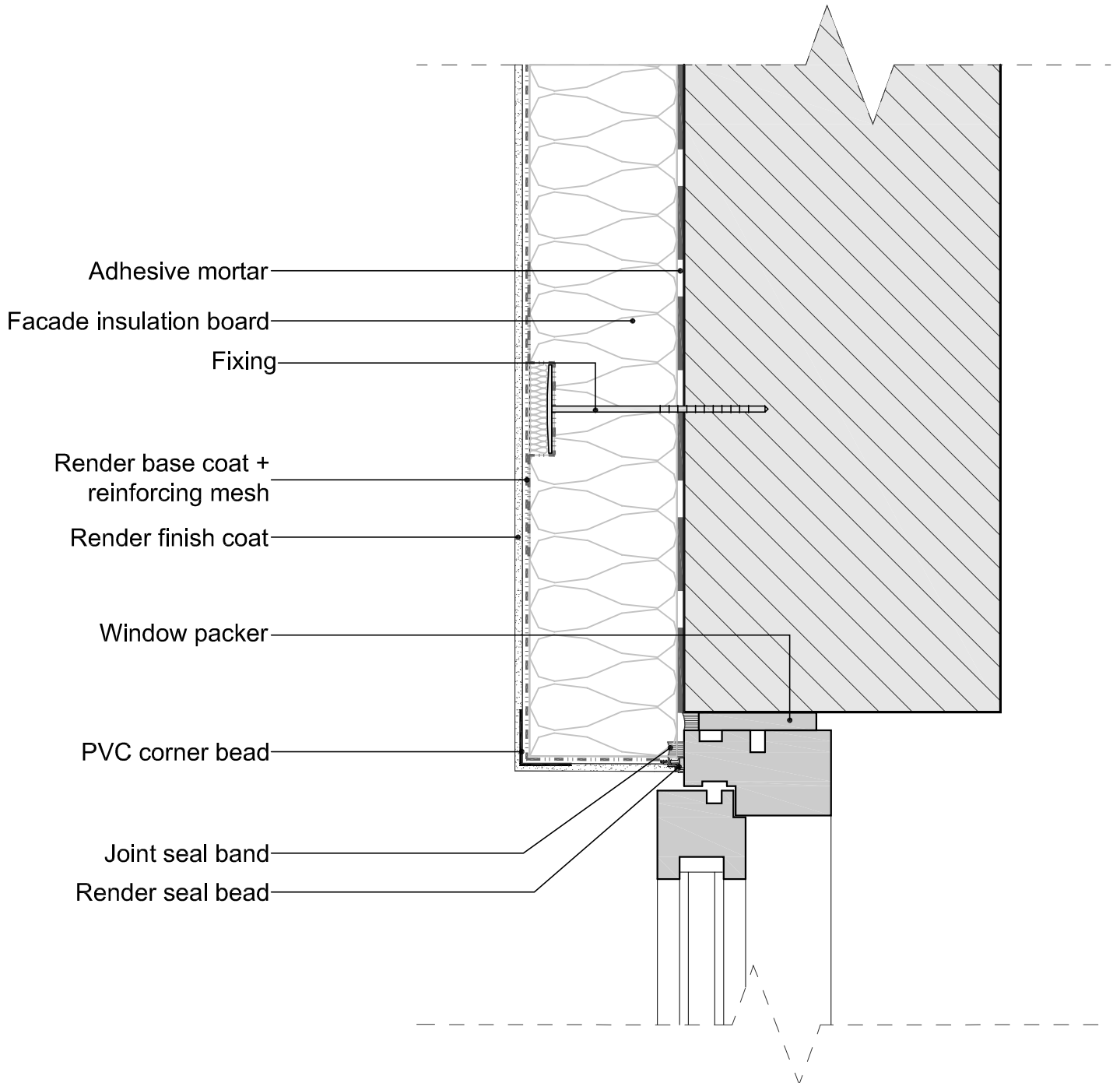
Note: 1. Location and level of dpc and footpath to be established during survey.
Project specific design to ensure that dpc is not compromised.

Baunit UK Ltd 4200 Waterside Centre Solihull Parkway Birmingham B37 7YN Tel: +44 (0)121-717 4843 www.baunit.co.uk	BAUMIT EXTERNAL WALL INSULATION SYSTEM		No. A 2.10
	Drawing INSULATED PLINTH DETAIL SECTION	Stage REFURBISHMENT	Rev. 1
			Date 08/2009
© Baunit UK Ltd . All rights reserved.			



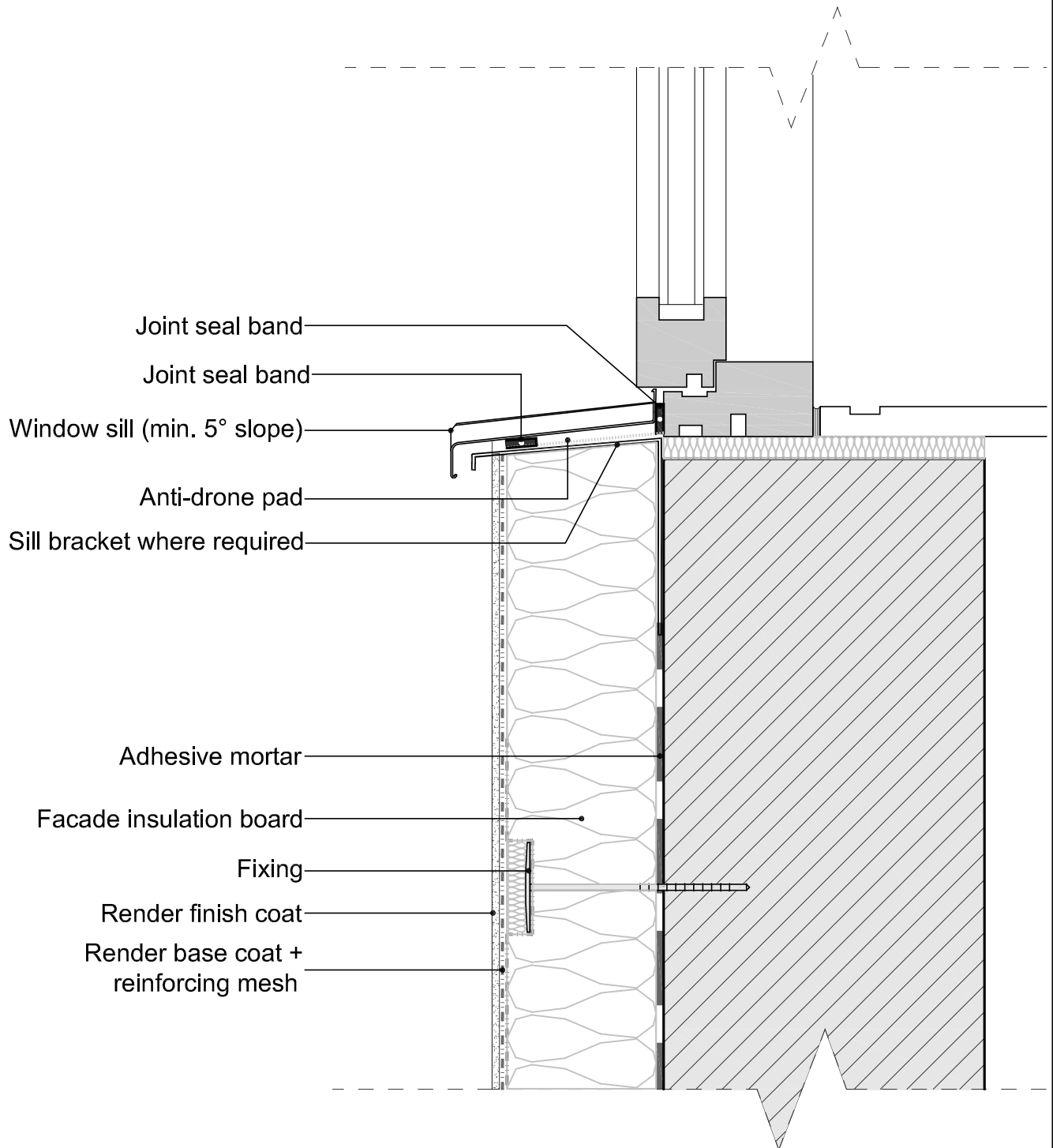
Note: 1. Location and level of dpc and footpath to be established during survey.
Project specific design to ensure that dpc is not compromised.

Baunit UK Ltd 4200 Waterside Centre Solihull Parkway Birmingham B37 7YN Tel: +44 (0)121-717 4843 www.baunit.co.uk	BAUMIT EXTERNAL WALL INSULATION SYSTEM		No. A 2.11
	Drawing BASE BEAD DETAIL SECTION	Stage REFURBISHMENT	Rev. 1
	© Baunit UK Ltd . All rights reserved.		Date 08/2009



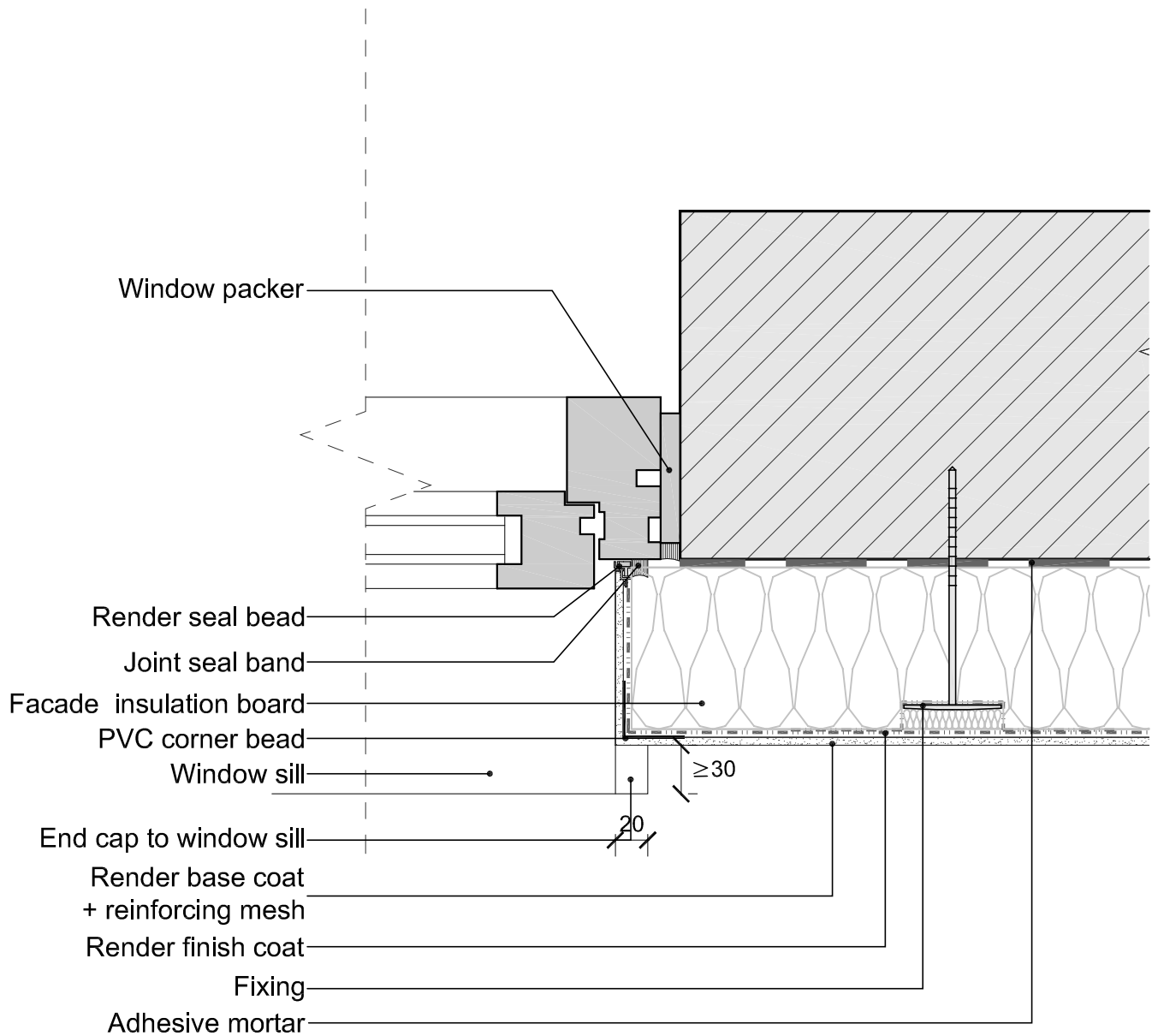
Note: 1. Positive fixings to be provided around all window and door openings to ensure adequate and robust edge restraint.

Baumit UK Ltd 4200 Waterside Centre Solihull Parkway Birmingham B37 7YN Tel: +44 (0)121-717 4843 www.baumit.co.uk	BAUMIT EXTERNAL WALL INSULATION SYSTEM		No. B 1.10
	Drawing WINDOW HEAD DETAIL SECTION	Stage NEW CONSTRUCTION	Rev. 1
	© Baumit UK Ltd . All rights reserved.		Date 08/2009



Note: 1. Window sill fixing and sealing to be in accordance with manufacturer's instructions.
 2. Window unit and sill to be compatible ie provide a fully sealed, flush finished joint at interface. Other sill/frame designs must achieve equivalent standard of sealing, fixing and movement accommodation at sill/frame interface and sill/reveal interface. Sill upstand should not compromise window drainage.

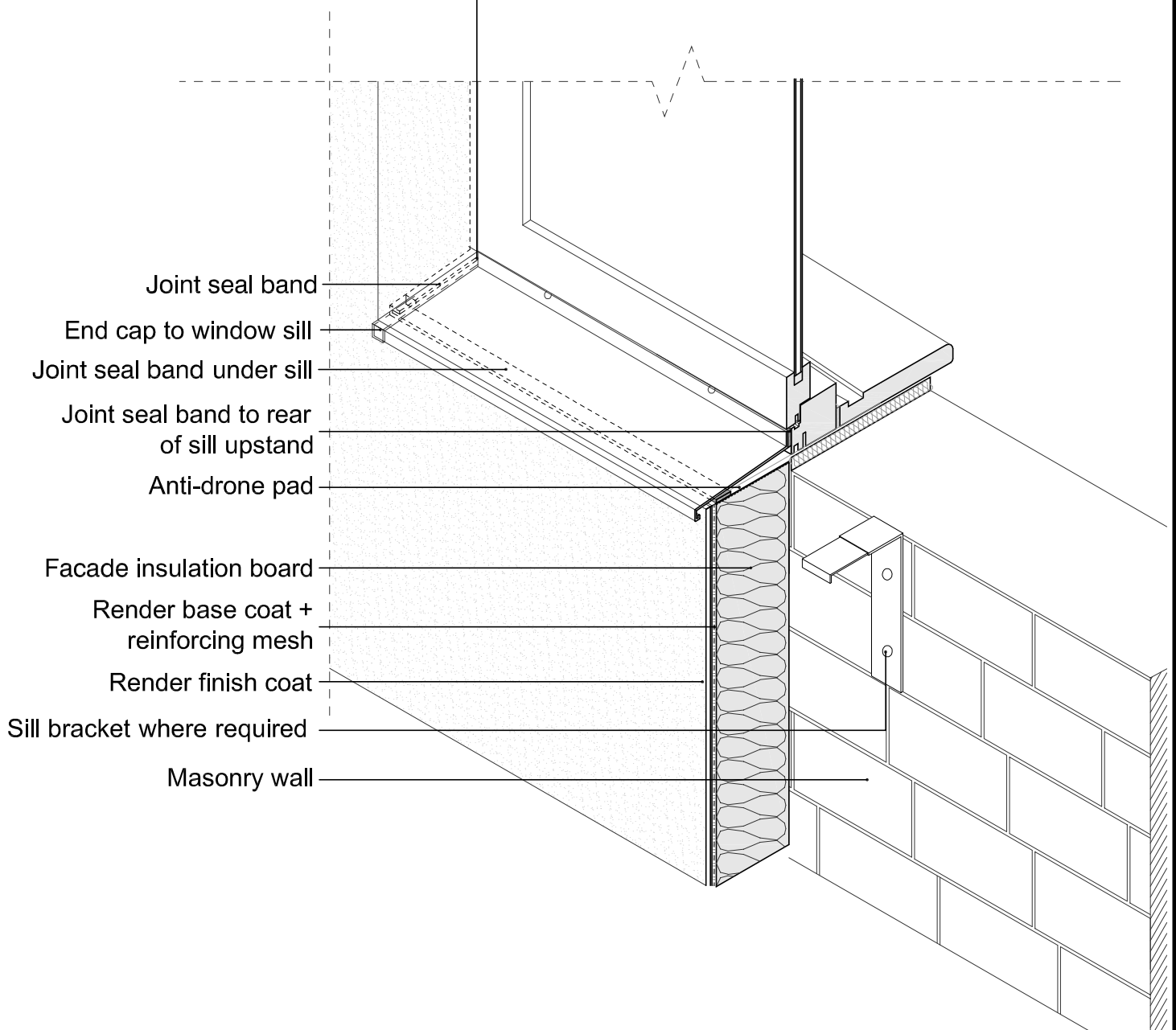
Baumit UK Ltd 4200 Waterside Centre Solihull Parkway Birmingham B37 7YN Tel: +44 (0)121-717 4843 www.baumit.co.uk	BAUMIT EXTERNAL WALL INSULATION SYSTEM		No. B 1.11
	Drawing WINDOW SILL DETAIL SECTION	Stage NEW CONSTRUCTION	Rev. 1
	© Baumit UK Ltd . All rights reserved.		Date 08/2009



Note: 1. Positive fixings to be provided around all window and door openings to ensure adequate and robust edge restraint.
 2. Flexible sealant to be provided as necessary at all intersections between dissimilar materials.

Baumit UK Ltd 4200 Waterside Centre Solihull Parkway Birmingham B37 7YN Tel: +44 (0)121-717 4843 www.baumit.co.uk	BAUMIT EXTERNAL WALL INSULATION SYSTEM		No. B 1.12
	Drawing RECESSED WINDOW REVEAL DETAIL PLAN	Stage REFURBISHMENT	Rev. 1
	© Baumit UK Ltd . All rights reserved.		Date 08/2009

Continuous strip of joint seal band between insulation and sill (at top and outside of sill endcap and under sill)



Note: 1. Window sill fixing and sealing to be in accordance with manufacturer's instructions.
 2. Window unit and sill to be compatible ie provide a fully sealed, flush finished joint at interface. Other sill/frame designs must achieve equivalent standard of sealing, fixing and movement accommodation at sill/frame interface and sill/reveal interface. Sill upstand should not compromise window drainage.

Baumit UK Ltd
 4200 Waterside Centre
 Solihull Parkway
 Birmingham B37 7YN
 Tel: +44 (0)121-717 4843
 www.baumit.co.uk

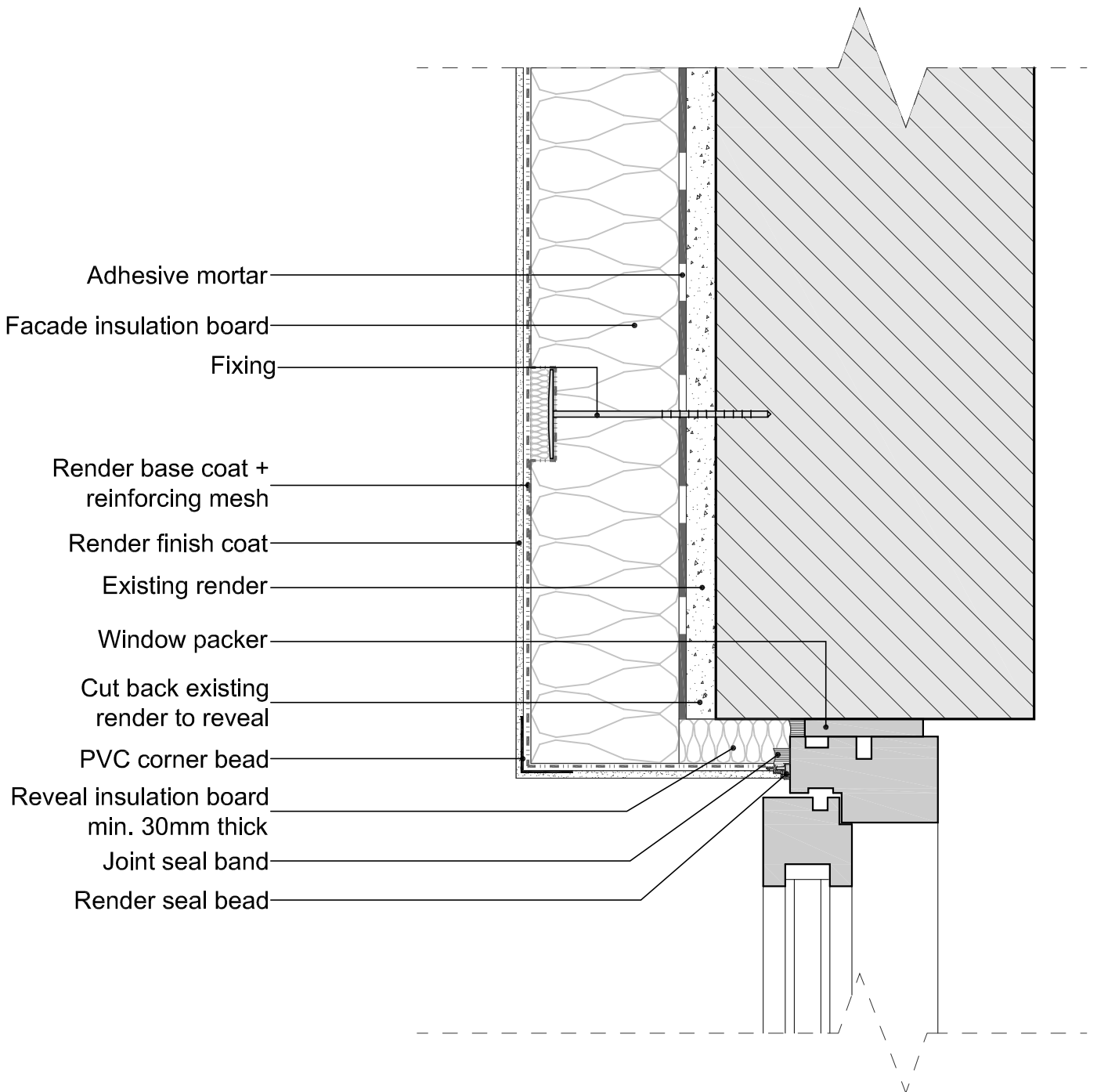
BAUMIT EXTERNAL WALL INSULATION SYSTEM

Drawing
 WINDOW SILL
 ISOMETRIC VIEW

Stage
 NEW CONSTRUCTION

No.	B 1.13
Rev.	1
Date	08/2009

© Baumit UK Ltd . All rights reserved.



Note: 1. Positive fixings to be provided around all window and door openings to ensure adequate and robust edge restraint.

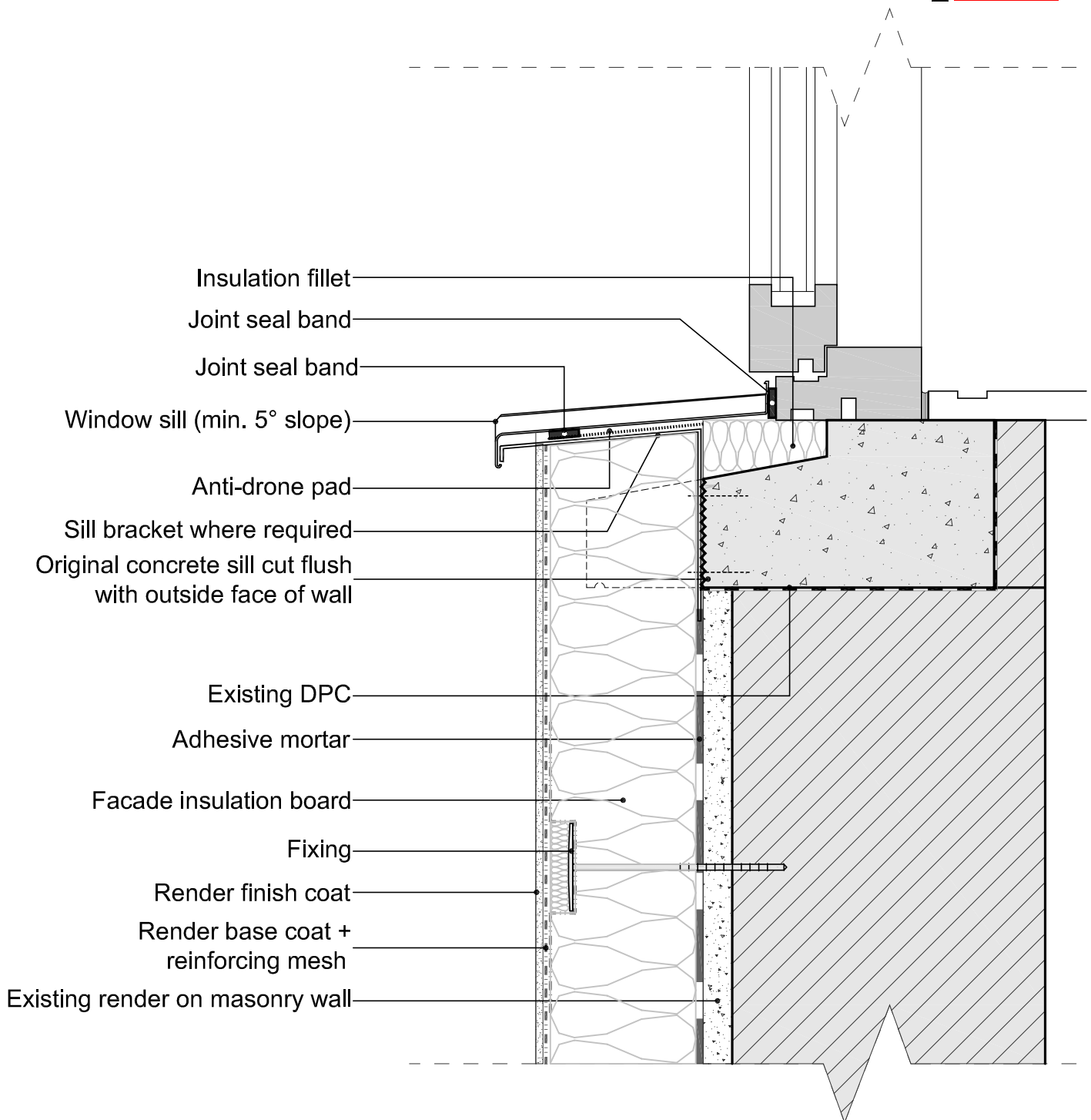
Baumit UK Ltd
 4200 Waterside Centre
 Solihull Parkway
 Birmingham B37 7YN
 Tel: +44 (0)121-717 4843
 www.baumit.co.uk

BAUMIT EXTERNAL WALL INSULATION SYSTEM

Drawing
 RECESSED WINDOW HEAD
 DETAIL SECTION

Stage
 REFURBISHMENT

No.	B 2.10
Rev.	1
Date	08/2009



Note: 1. Window sill fixing and sealing to be in accordance with manufacturer's instructions.
 2. Window unit and sill to be compatible ie provide a fully sealed, flush finished joint at interface. Other sill/frame designs must achieve equivalent standard of sealing, fixing and movement accommodation at sill/frame interface and sill/reveal interface. Sill upstand should not compromise window drainage.

Baumit UK Ltd
 4200 Waterside Centre
 Solihull Parkway
 Birmingham B37 7YN
 Tel: +44 (0)121-717 4843
 www.baumit.co.uk

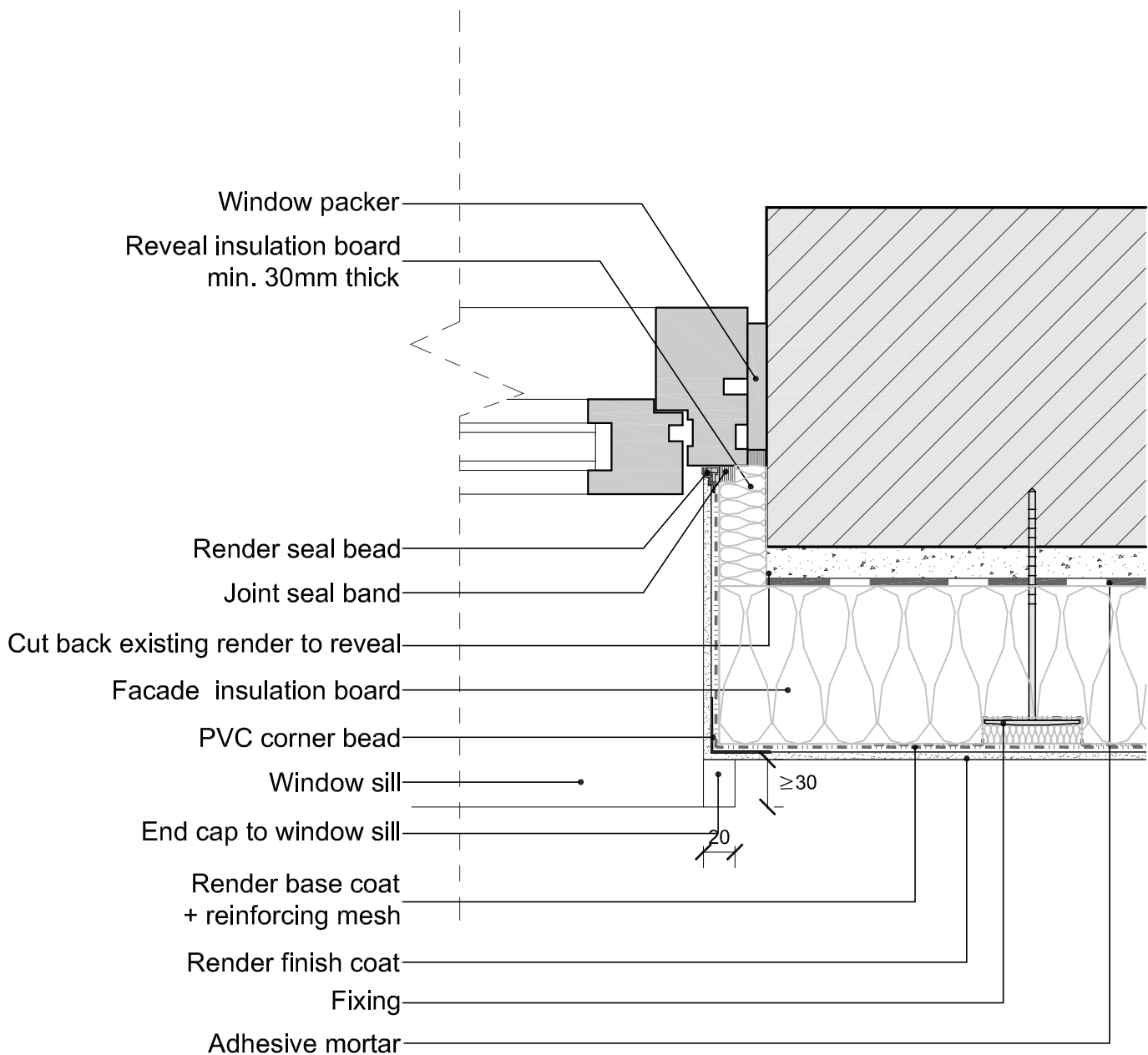
BAUMIT EXTERNAL WALL INSULATION SYSTEM

Drawing
 RECESSED WINDOW SILL
 DETAIL SECTION

Stage
 REFURBISHMENT

No.	B 2.11
Rev.	1
Date	08/2009

© Baumit UK Ltd . All rights reserved.



- Note: 1. Positive fixings to be provided around all window and door openings to ensure adequate and robust edge restraint.
 2. Flexible sealant to be provided as necessary at all intersections between dissimilar materials.

Baumit UK Ltd
 4200 Waterside Centre
 Solihull Parkway
 Birmingham B37 7YN
 Tel: +44 (0)121-717 4843
 www.baumit.co.uk

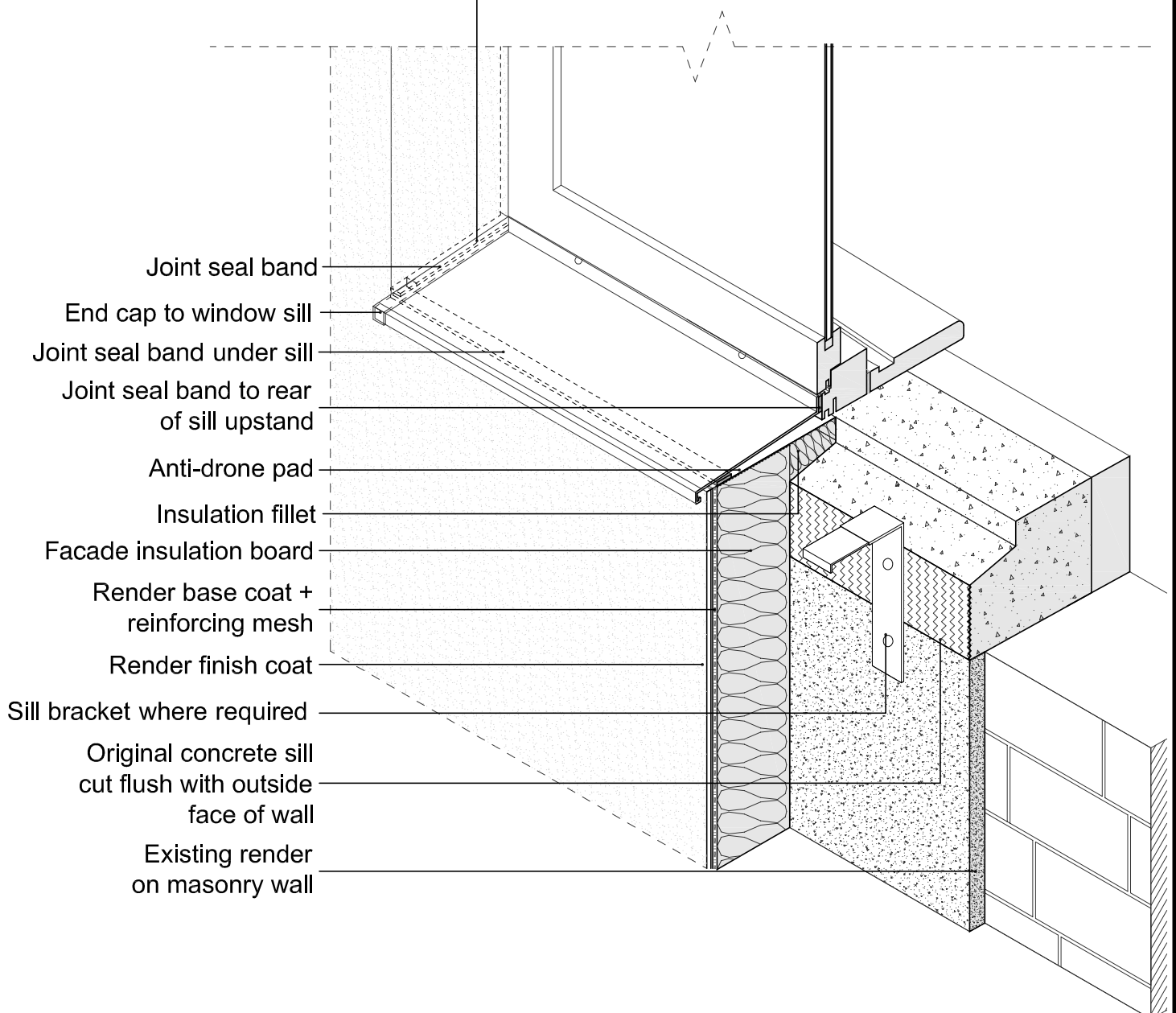
BAUMIT EXTERNAL WALL INSULATION SYSTEM

Drawing
 RECESSED WINDOW REVEAL
 DETAIL PLAN

Stage
 REFURBISHMENT

No.	B 2.12
Rev.	1
Date	08/2009

Continuous strip of joint seal band between insulation and sill (at top and outside of sill endcap and under sill)



- Joint seal band
- End cap to window sill
- Joint seal band under sill
- Joint seal band to rear of sill upstand
- Anti-drone pad
- Insulation fillet
- Facade insulation board
- Render base coat + reinforcing mesh
- Render finish coat
- Sill bracket where required
- Original concrete sill cut flush with outside face of wall
- Existing render on masonry wall

Note: 1. Window sill fixing and sealing to be in accordance with manufacturer's instructions.
 2. Window unit and sill to be compatible ie provide a fully sealed, flush finished joint at interface. Other sill/frame designs must achieve equivalent standard of sealing, fixing and movement accommodation at sill/frame interface and sill/reveal interface. Sill upstand should not compromise window drainage.

Baunit UK Ltd 4200 Waterside Centre Solihull Parkway Birmingham B37 7YN Tel: +44 (0)121-717 4843 www.baunit.co.uk	BAUMIT EXTERNAL WALL INSULATION SYSTEM		No. B 2.13
	Drawing RECESSED WINDOW SILL ISOMETRIC VIEW	Stage REFURBISHMENT	Rev. 1
	© Baunit UK Ltd . All rights reserved.		Date 08/2009

Ensure continuity of insulation at junction of attic quilt insulation and external wall insulation

Fire stop board provided between external insulation and roof cavity

Proprietary roof ventilator

Render stop bead

Hanger for soffit

Joint seal band

Fascia

Proprietary eaves ventilation

Render finish coat

Render base coat + reinforcing mesh

Facade insulation board

Adhesive mortar

Note: 1. Provision for fire stopping, ventilation and insulation at eaves to be fully in accordance with the Building Regulations.

Baumit UK Ltd
4200 Waterside Centre
Solihull Parkway
Birmingham B37 7YN
Tel: +44 (0)121-717 4843
www.baumit.co.uk

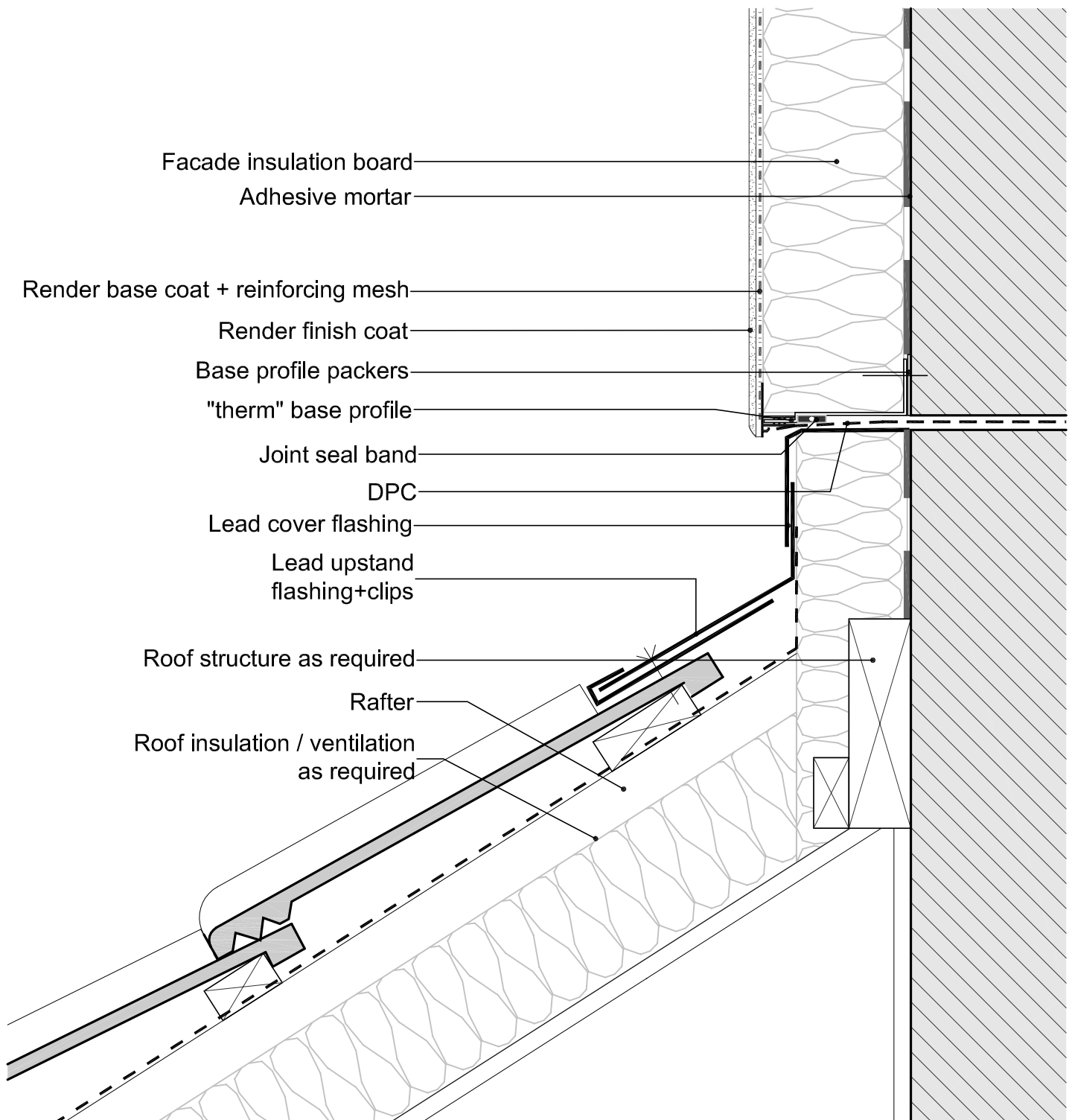
BAUMIT EXTERNAL WALL INSULATION SYSTEM

Drawing
EAVES
DETAIL SECTION

© Baumit UK Ltd . All rights reserved.

Stage
NEW CONSTRUCTION

No.	C 1.10
Rev.	1
Date	08/2009



Note: 1. Provision for fire stopping, ventilation and insulation of roof to be fully in accordance with the Building Regulations.

Baumit UK Ltd
 4200 Waterside Centre
 Solihull Parkway
 Birmingham B37 7YN
 Tel: +44 (0)121-717 4843
 www.baumit.co.uk

BAUMIT EXTERNAL WALL INSULATION SYSTEM

Drawing
 LEAN-TO ROOF
 DETAIL SECTION

Stage
 NEW CONSTRUCTION

No.	C 1.11
Rev.	1
Date	08/2009

© Baumit UK Ltd. All rights reserved.

Ensure continuity of insulation at junction of attic quilt insulation and external wall insulation

Existing render on masonry wall

Fire stop board provided between external insulation and roof cavity

Proprietary roof ventilator

Render stop bead

Hanger for soffit

Joint seal band

Fascia

Proprietary eaves ventilation

Render finish coat

Render base coat + reinforcing mesh

Facade insulation board

Adhesive mortar

Note: 1. Provision for fire stopping, ventilation and insulation at eaves to be fully in accordance with the Building Regulations.

Baumit UK Ltd
4200 Waterside Centre
Solihull Parkway
Birmingham B37 7YN
Tel: +44 (0)121-717 4843
www.baumit.co.uk

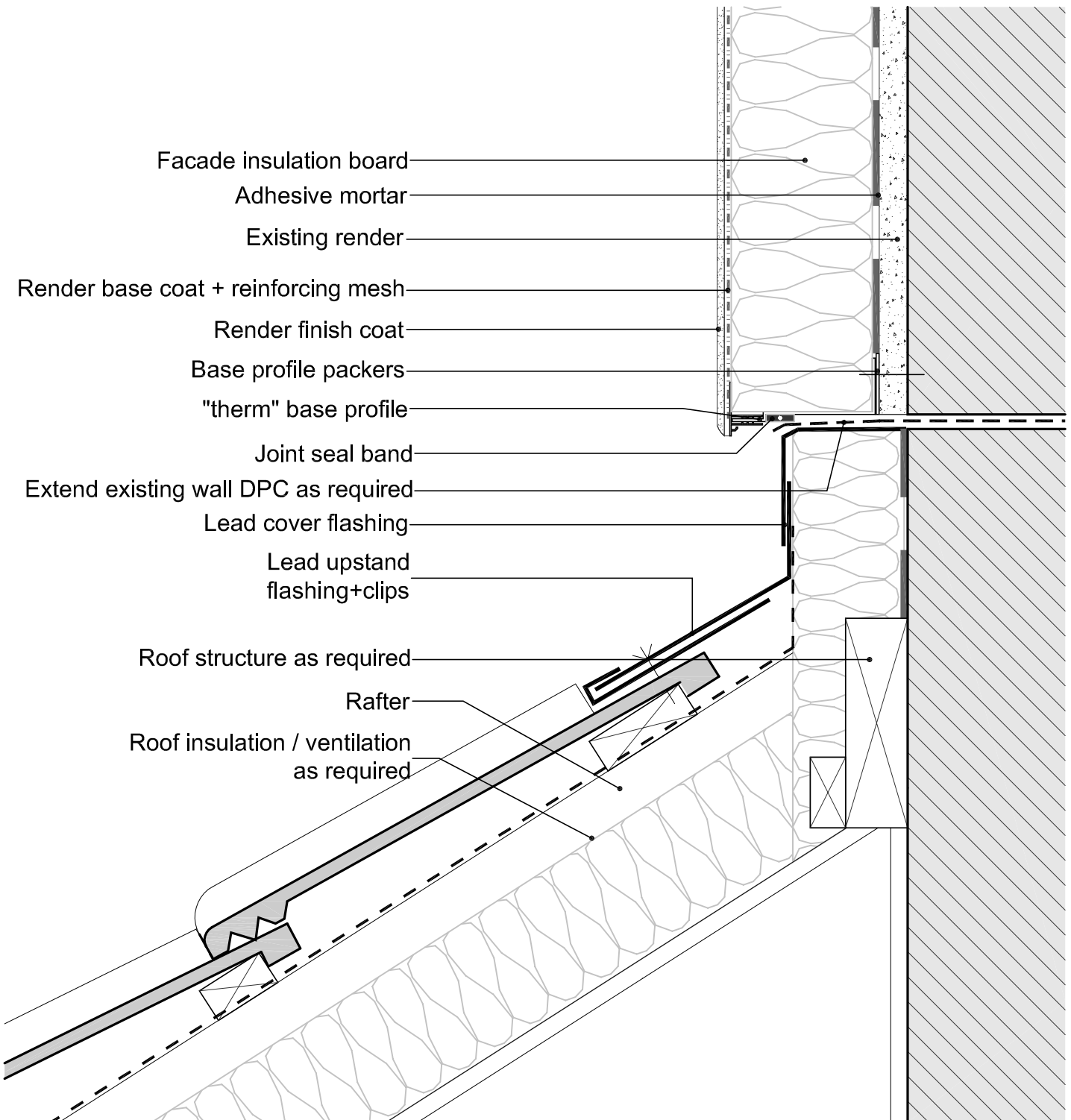
BAUMIT EXTERNAL WALL INSULATION SYSTEM

Drawing
EAVES
DETAIL SECTION

© Baumit UK Ltd . All rights reserved.

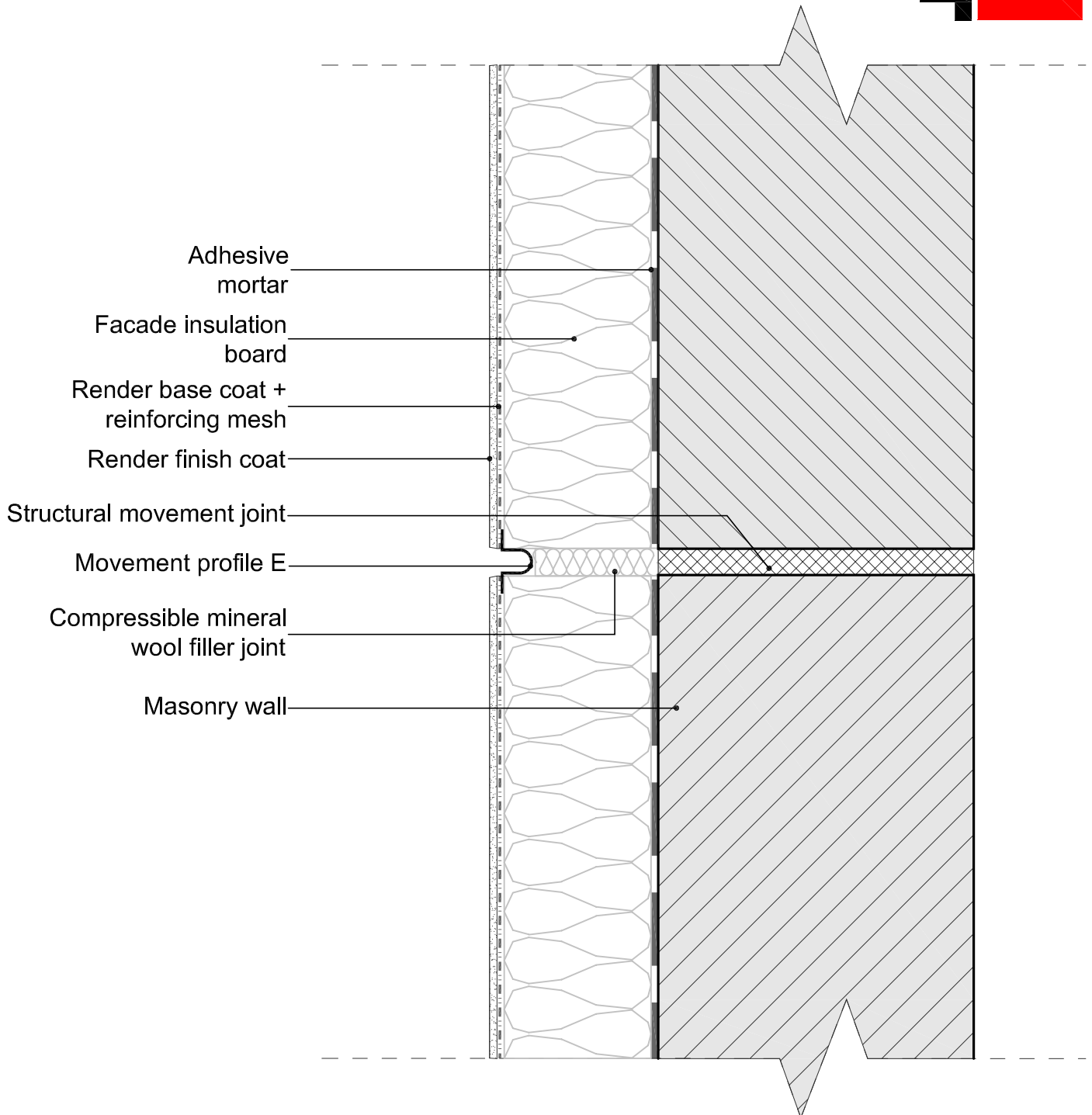
Stage
REFURBISHMENT

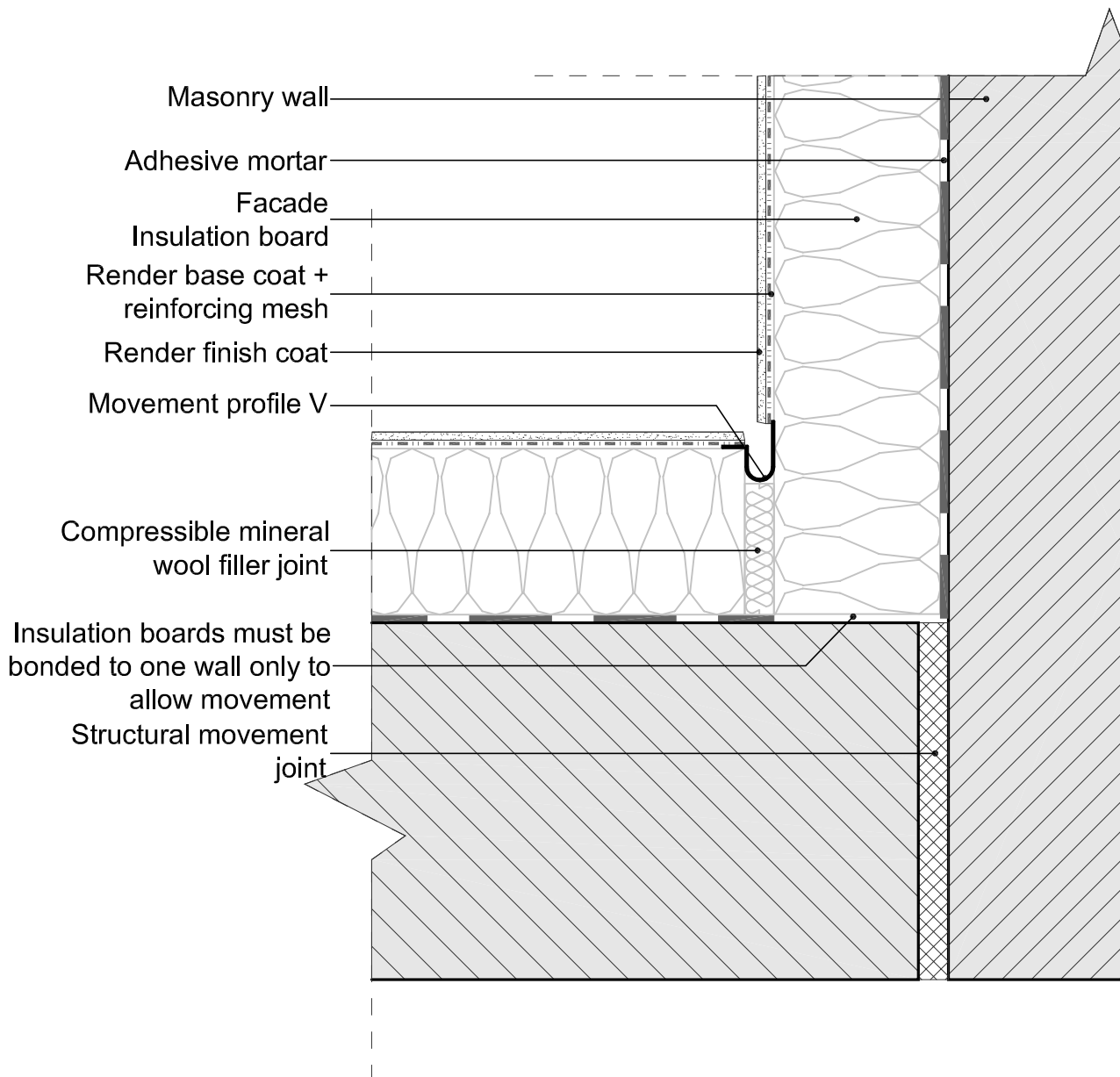
No.
C 2.10
Rev.
1
Date
08/2009

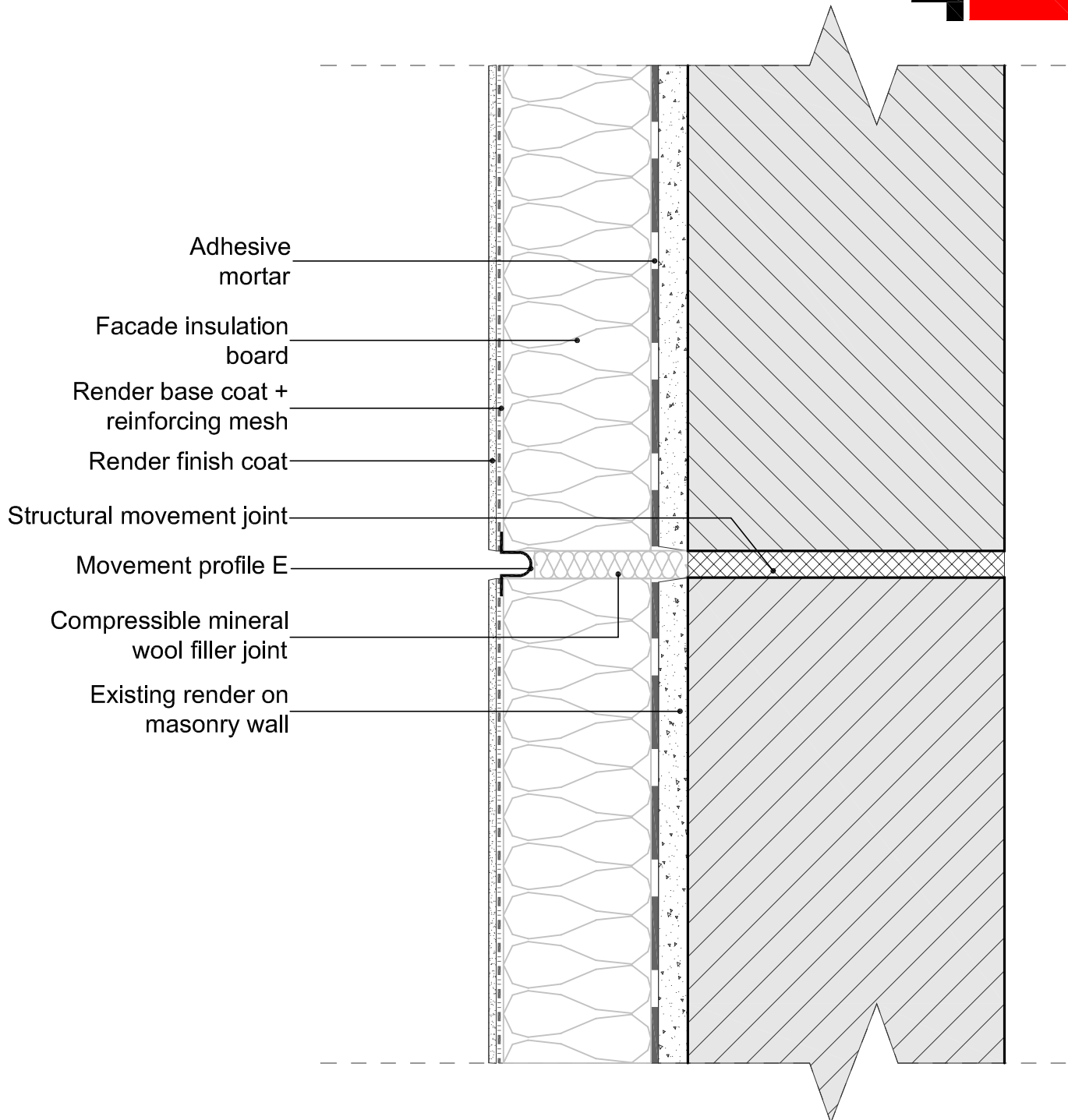


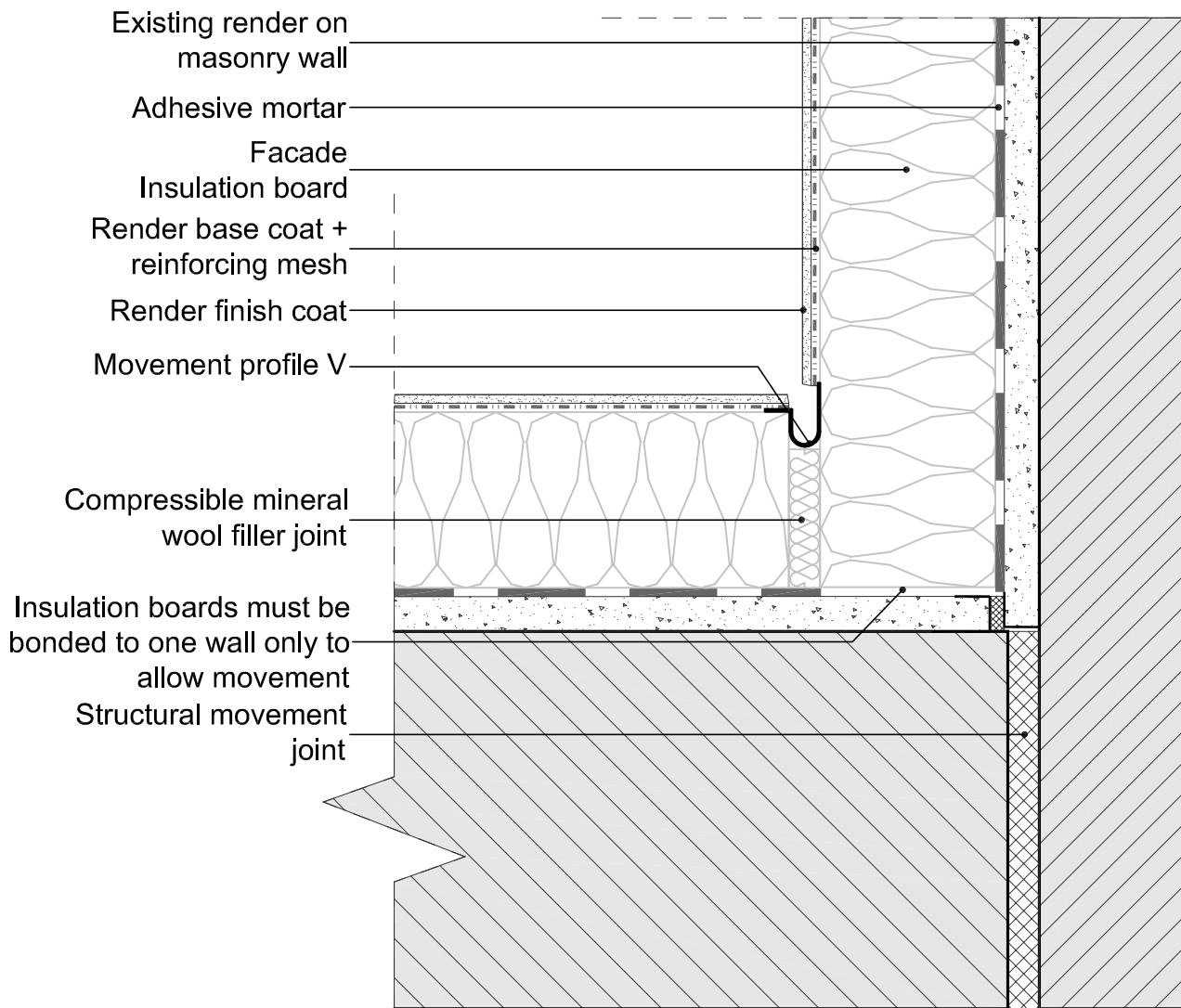
Note: 1. Provision for fire stopping, ventilation and insulation of roof to be fully in accordance with the Building Regulations.

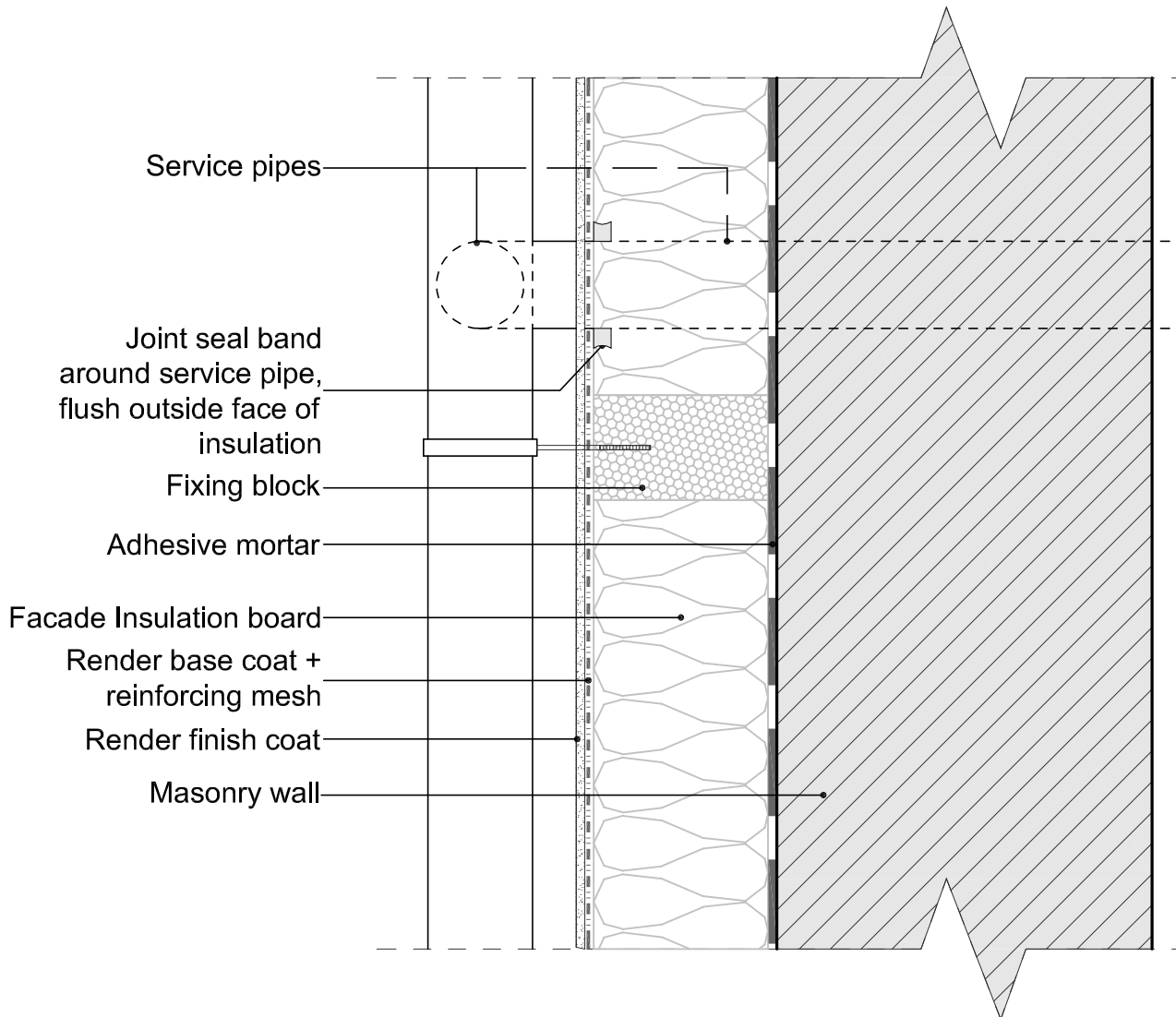
Baumit UK Ltd 4200 Waterside Centre Solihull Parkway Birmingham B37 7YN Tel: +44 (0)121-717 4843 www.baumit.co.uk	BAUMIT EXTERNAL WALL INSULATION SYSTEM		No. C 2.11
	Drawing LEAN-TO ROOF DETAIL SECTION	Stage REFURBISHMENT	Rev. 1
	© Baumit UK Ltd . All rights reserved.		Date 08/2009











Note: 1. Fixing to be appropriate for use. Where necessary fixing should be secured to substrate.
See Baumit typical details.

Baumit UK Ltd
4200 Waterside Centre
Solihull Parkway
Birmingham B37 7YN
Tel: +44 (0)121-717 4843
www.baumit.co.uk

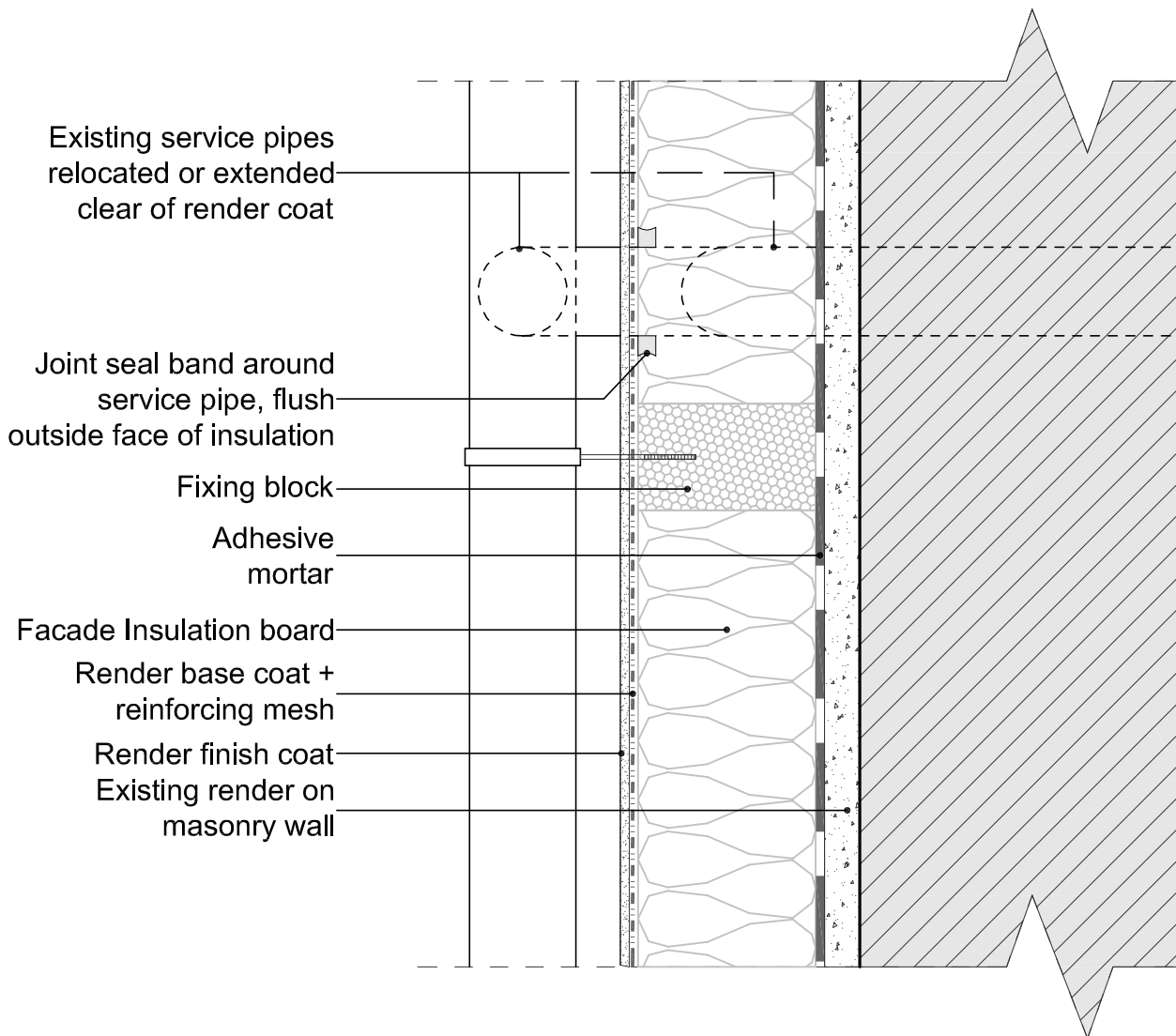
BAUMIT EXTERNAL WALL INSULATION SYSTEM

Drawing
SERVICE PIPE CONNECTION
DETAIL SECTION

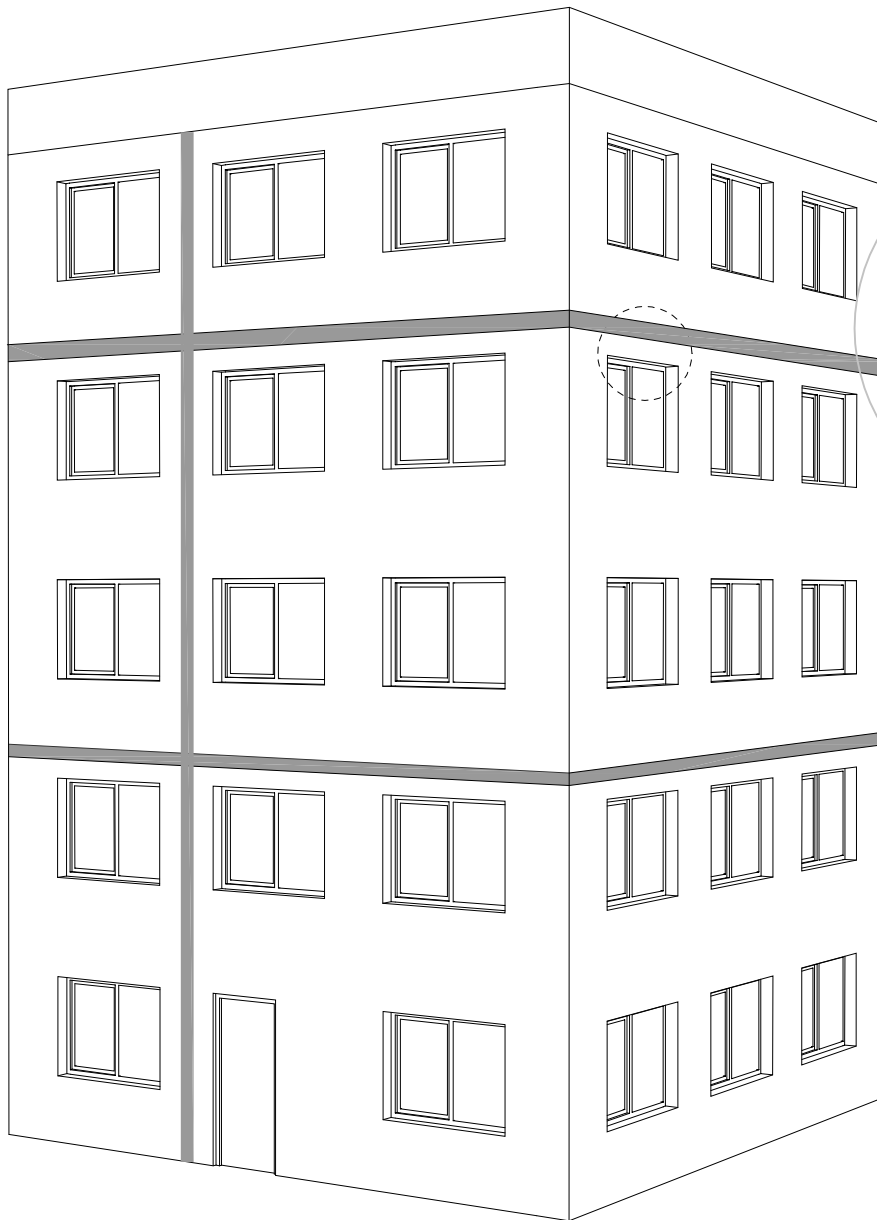
Stage
NEW CONSTRUCTION

No.	E 1.10
Rev.	1
Date	08/2009

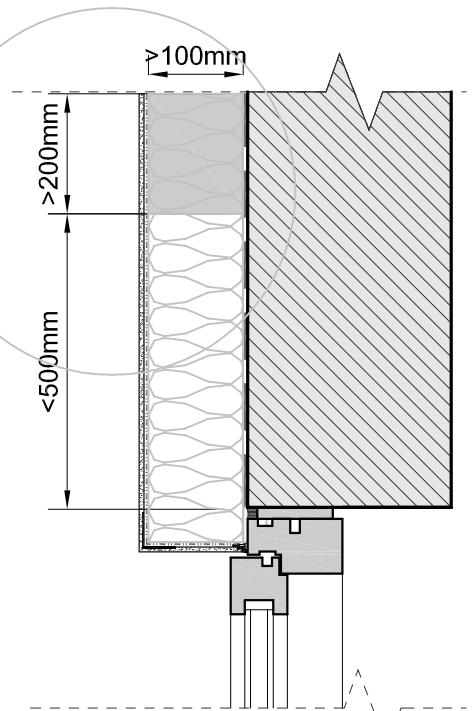
© Baumit UK Ltd . All rights reserved.



Note: 1. Fixing to be appropriate for use. Where necessary fixing should be secured to substrate.
See Baumit typical details.



Fixing of fire barrier to special detail



Fire break installed at every second floor level and at compartment walls

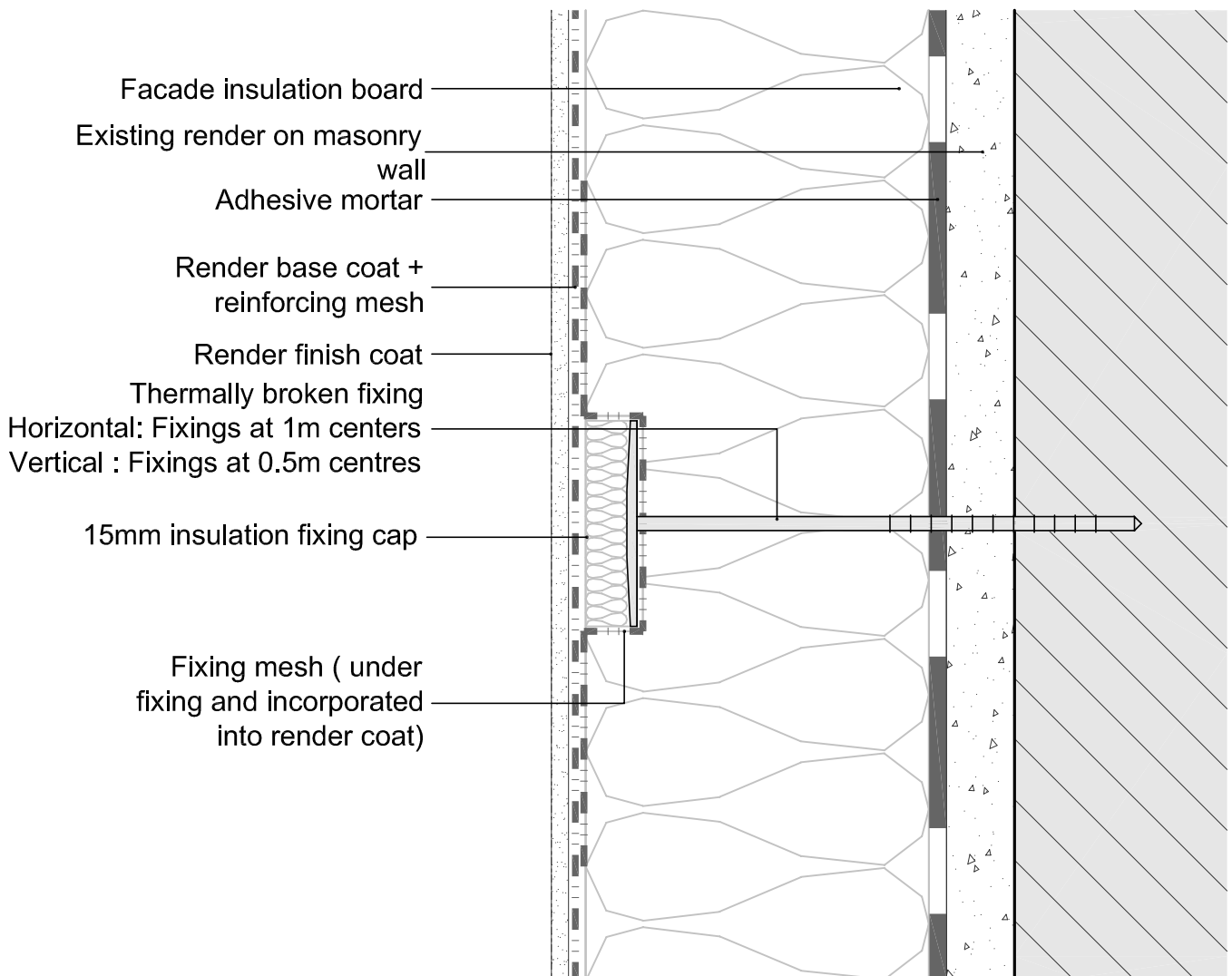
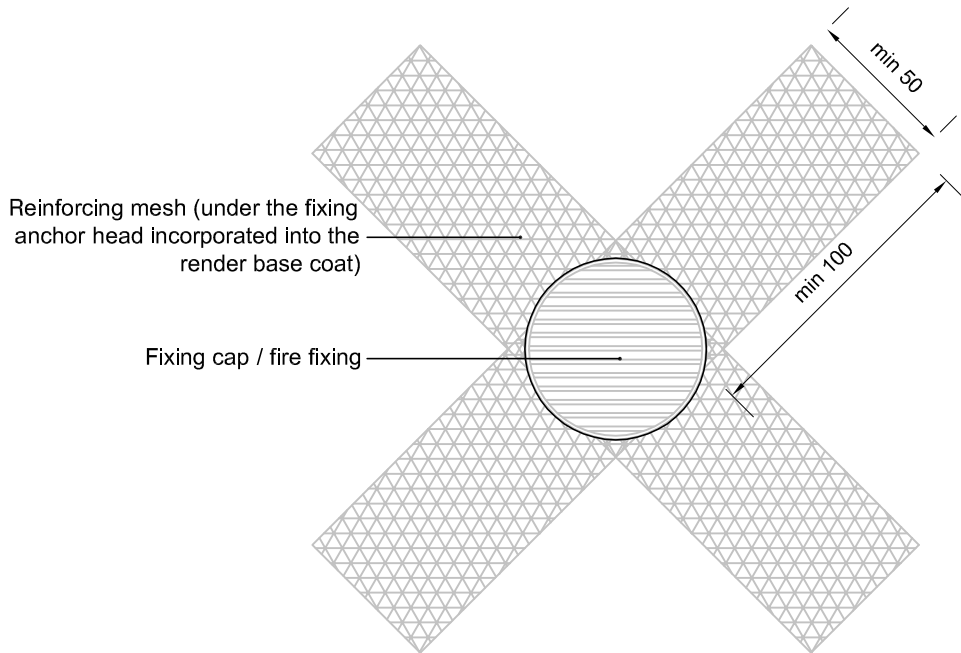
Baumit UK Ltd
4200 Waterside Centre
Solihull Parkway
Birmingham B37 7YN
Tel: +44 (0)121-717 4843
www.baumit.co.uk

BAUMIT EXTERNAL WALL INSULATION SYSTEM

Drawing
FIRE BARRIER / CONTINUOUS FIRE BREAK
DETAIL SECTION / ISOMETRIC VIEW

Stage
NEW CONSTRUCTION

No.
F 1.11
Rev.
1
Date
08/2009



Note: 1. Mechanical and fire fixings in accordance with project specific design

Baumit UK Ltd
4200 Waterside Centre
Solihull Parkway
Birmingham B37 7YN
Tel: +44 (0)121-717 4843
www.baumit.co.uk

BAUMIT EXTERNAL WALL INSULATION SYSTEM

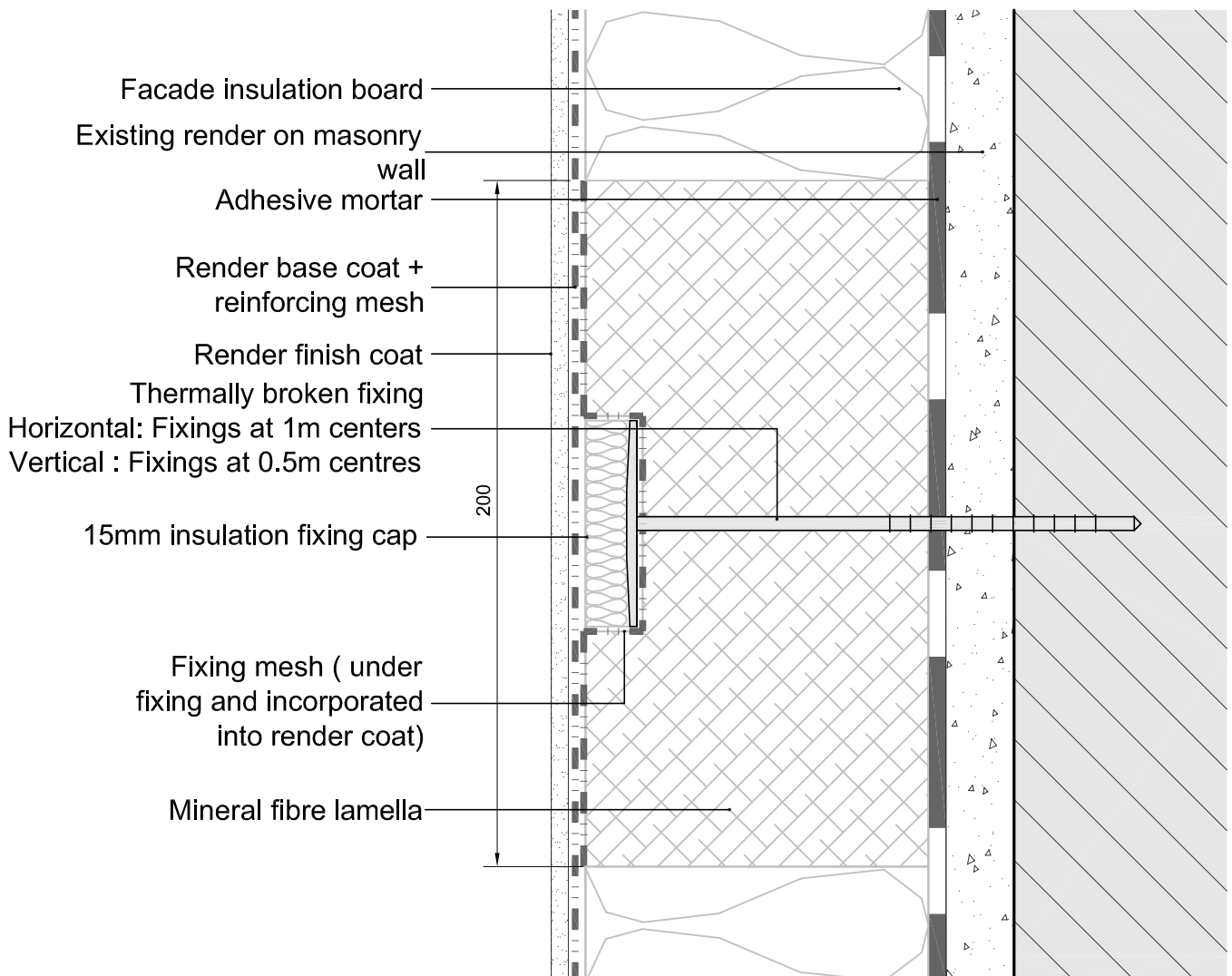
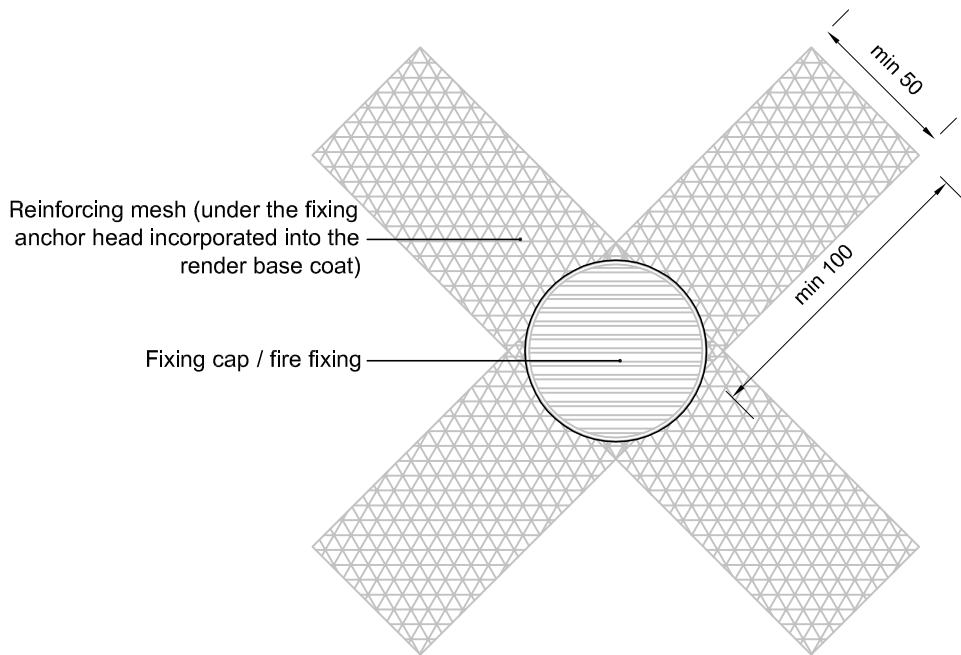
Drawing
FIRE FIXING
DETAIL SECTION

Stage
REFURBISHMENT

No.
F 2.10

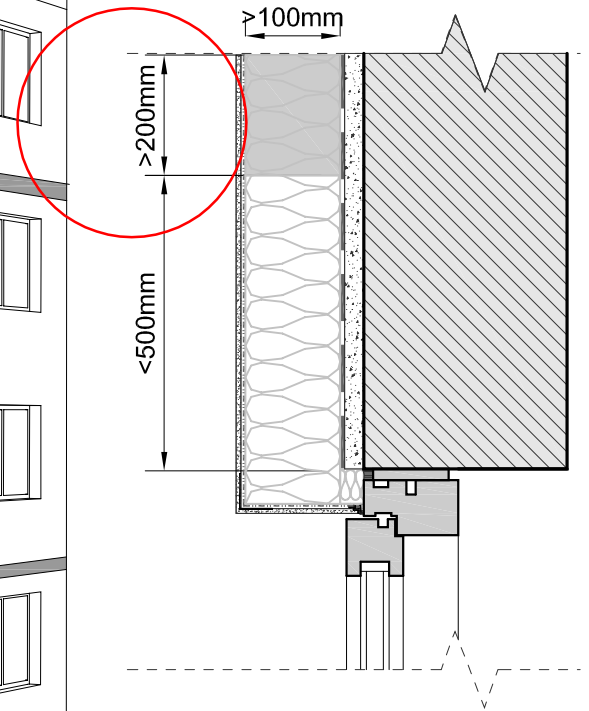
Rev.
1

Date
08/2009





Fixing of fire barrier to special detail



Fire break installed at every second floor level and at compartment walls

Baumit UK Ltd
4200 Waterside Centre
Solihull Parkway
Birmingham B37 7YN
Tel: +44 (0)121-717 4843
www.baumit.co.uk

BAUMIT EXTERNAL WALL INSULATION SYSTEM

Drawing
FIRE BARRIER / CONTINUOUS FIRE BREAK
DETAIL SECTION / ISOMETRIC VIEW

Stage
REFURBISHMENT

No.
F 2.12

Rev.

1

Date

08/2009