

BACKTOEARTH

www.backtoearth.co.uk



01392 861763

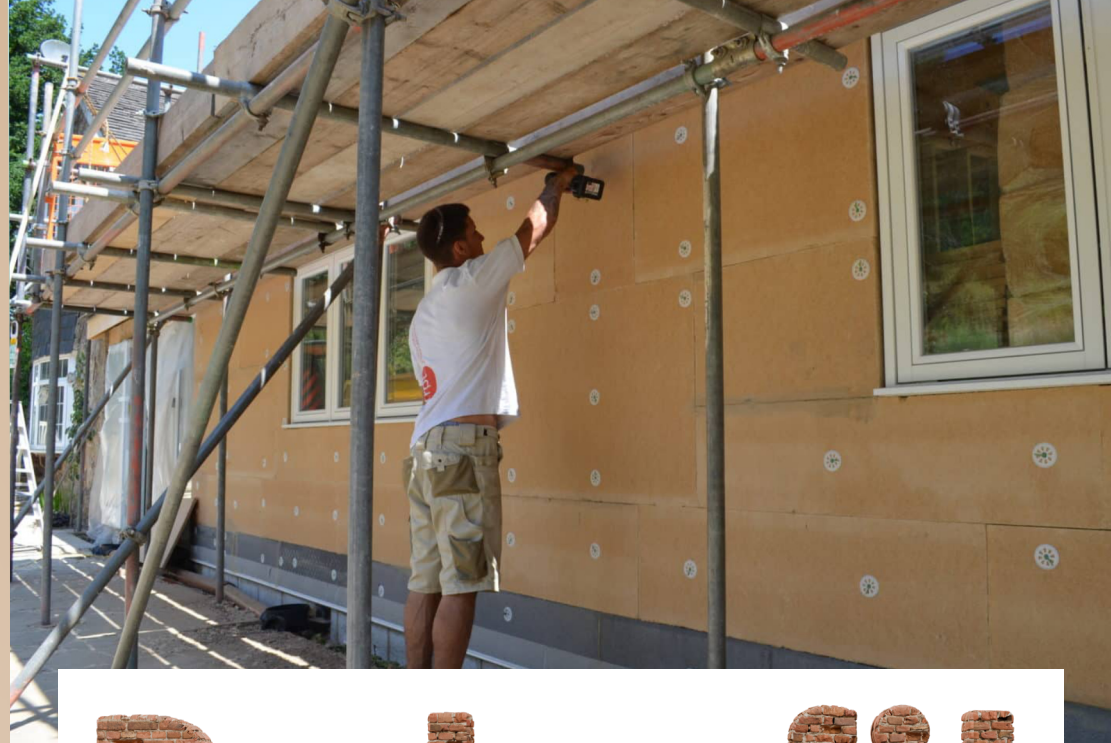


justask@backtoearth.co.uk



@backtoearthltd

As proud signatories of **The Anti-Greenwash Charter**, we are dedicated to upholding its standards in all our sustainability communications. If you have any feedback or concerns, please review our escalation procedure in our **Green Claims Policy**.



Retrofit

Most of the UK's housing stock was built before modern energy standards – leaving homes with poor insulation, high energy use, and uncomfortable living conditions. Retrofitting existing buildings is one of the most impactful steps we can take toward living and health and comfort and reducing these emissions but only if the materials are right for the job. Natural, vapour-open materials work with your building,

managing moisture flows and preventing accumulation. Done well, retrofit improves health and comfort, cuts energy use, and protects the building fabric for decades, so getting the specification right makes all the difference. At Back to Earth, retrofit is our bread and butter, we have the expertise, experience and the materials to help you get it right.

UdiRECO board – levelling and insulating uneven masonry walls for safe, breathable retrofits.



New Build

Low risk with high levels of performance.

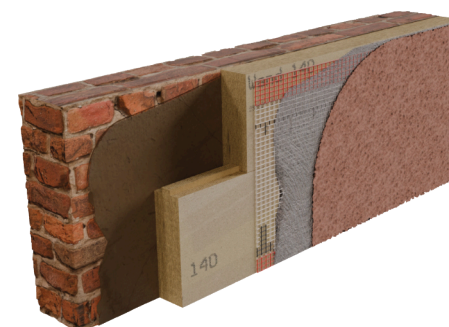
When you're building from the ground up, you have a rare opportunity to get things right from the start. A fabric-first approach – prioritising the performance of walls, roof, and floor before specifying heating and ventilation – is the most effective way to create a healthy home that's genuinely comfortable year-round.

Our range of natural and sustainable materials is well suited to low-energy and Passivhaus-standard builds. Wood fibre insulation in particular offers high thermal mass and acoustic insulation, keeping interiors cooler in summer as well as warm in winter. We work closely with architects, self-builders, and contractors to develop specifications that hit the numbers and suit the build.



Clad & Rendered Finish

Wood fibre external wall insulation can be finished with a directly applied render or clad with timber or render carrier boards. The breathable render systems applied to the boards use a mesh-reinforced base coat plaster and are finished with a self-coloured, silicone finish renders. The finish renders are available in various textures and hundreds of different colours, giving great flexibility in the outward appearance of the building. All sorts of cladding can be fixed over the wood fibre boards, from traditional and modern forms of timber, to metals and masonry.



BACKTOEARTH

Helping You Build With Confidence

NatureWall

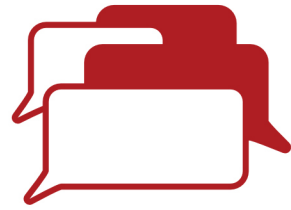
Our internal wall insulation system just earned KIWA BDA Agrément Certification. Find out why it matters.

Back To Earth LTD
Company Brochure 2026



Consultation

Every project starts with a conversation. Whether you're an architect working up a spec, a builder on site with a question, or a homeowner tackling a retrofit, we'll take the time to understand your unique building and what it needs, however complicated. That's how we've worked since day one.



The people who'll be helping you build with confidence.

Chris Brookman
Founder and Director



Sasha Feehan
Team leader



Andy Bannister
Building Biology Specialist



Maria Williams
Office Administrator



Marian Lloyed-Jones
Technical Sales Consultant



Ready to start the journey? Contact us. 



Specification

No two buildings are the same, and neither are our specifications. We work with you to develop a bespoke solution for your project – drawing on our in-house expertise, our Specification Generator and a unique product range built around performance and long-term results. Tailored to your project, not taken off a shelf.

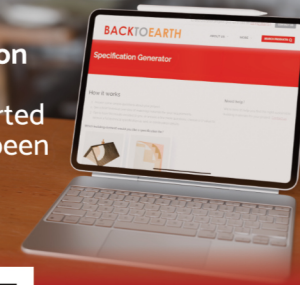


NatureWall

A safe, simple, effective internal wall insulation system for solid walls combining the moisture management capabilities of natural wood fibre insulation with the speed of modern methods. It's KIWA BDA Agrément certificate ensures full PAS2030/35 compliance and its finished with plasterboard and skim, enabling the use of standard trade skills. Integrated membranes regulate moisture flow and airtightness, while a battened service zone allows services to be installed without compromising the airtightness envelope – suitable for both historic and modern wall constructions. Think NatureWall could be right for your project? Email naturewall@backtoearth.co.uk and let's talk.



With our Specification Generator getting started has never been so easy!



Scan the QR code to try it now at backtoearth.co.uk



Supply

From wood fibre boards and breathable renders to airtightness membranes and fixings, everything we stock is chosen for performance and low environmental impact. A curated range, not a catalogue – every product here is one we'd confidently use ourselves.



Insulation

We stock a wide range of wood fibre insulation boards, for internal and external applications, from different suppliers, alongside Multipor mineral boards, Styrodur XPS plinth insulation, Cemwood cavity fill, and Fixit 222 aerogel plaster. Whatever the build-up, our range ensures the right product for every project.



Airtight Membranes and Tapes

We stock a range of Ampack vapour control layer (VCL) membranes, variable VCL membranes, breathable membranes and facade membranes. Alongside this we have a suit of Ampack airtightness tapes for interior joints, external laps, window installation, corner details, and penetration sealing.



Fixings, Beads and Trims

From Fischer masonry and timber fixings to corner beads, plinth profiles, reinforcing mesh, and window edging strips, we stock all the accessories needed to detail and finish a wood fibre installation system properly – no second supplier required.



Renderers and Plasters

Our breathable lime render and plaster range from Baunit covers everything from basecoats to self-cleaning silicone finish renders. We also stock clay plasters for interior use, plus all primers, adhesive mortars, and reinforcing meshes to complete a full system.



Support

We invest in the people who use our materials. That's why we offer a wealth of educational resources and practical guidance to support you throughout your eco building project – because great buildings need great knowledge behind them.



Fibres Academy

Fibres Academy is a free online training platform for architects, builders and self-builders looking to master wood fibre insulation. Expert-led courses walk you through how to specify, source and install effectively. Once completed you can join the Fibres Expert Directory, connecting trained professionals to clients who need them.



Scan this QR code to head to the Fibres Website.

Back to Earth's Learning Lab

Alongside Fibres Academy, our Learning Lab is a dedicated space on backtoearth.co.uk packed with resources covering wood fibre insulation, airtightness, sustainable building and more. From step-by-step how-to guides to in-depth topical articles, the library is constantly growing – so whether you have a specific query or just want to explore, there's a good chance you'll find exactly what you're looking for.



Can I Just Ask?

Can I Just Ask? is our weekly social media video series answering common questions we hear from our customers. No-nonsense building advice covering everything from airtightness detailing to interstitial condensation. Watch the full series and follow us for new episodes every week. [@backtoearthltd](https://www.instagram.com/backtoearthltd)