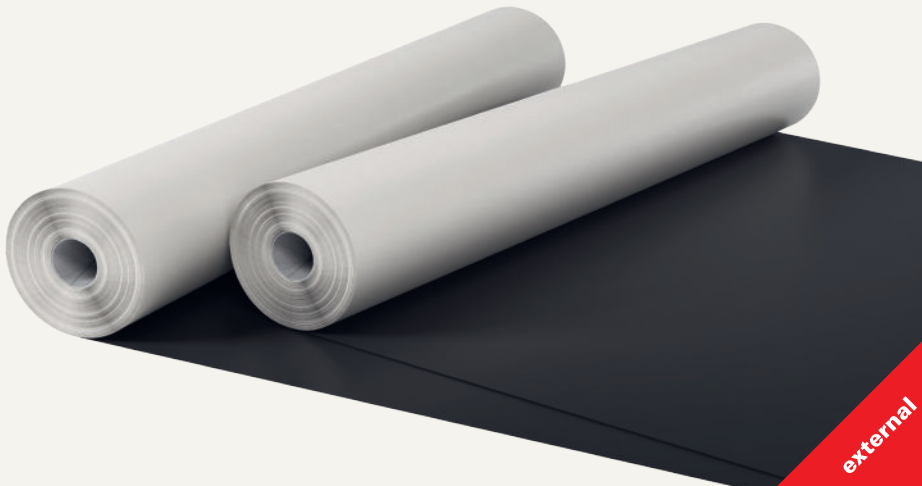


Ampatop® A black

Non-combustible, diffusion-permeable black membrane for roofs and façades



- > Fire behaviour: A2-s1,d0
- > Non-combustible: no contribution to fire in the ventilation level (curtain wall)
- > Extremely high tensile strength: fall-resistant in accordance with DIN 4426
- > High temperature resistance: particularly suitable for ventilated façades on multi-storey buildings and behind energy-generating systems
- > UV-stable
- > For open façades with joint widths of up to 50 mm/50%
- > Outdoor weathering: 9 months

Technical details		Value	Standard
S _d value		0,06m	EN 12572
Resistance to water penetration		W1	EN 13111
Weight		220g/m ²	EN 1849-2
Fire behaviour		A2-s1, d0	EN 13 501-1
Tensile strength	longitudinal	2900N/5cm	EN 12311-1
	transverse	2150N/5cm	
Elongation	longitudinal	4,4%	EN 12 311-1
	transverse	3,2%	
Resistance to further tearing	longitudinal	150N	EN 12310-1
	transverse	160N	
Natural weathering period		9 months (before installation of the façade lining)	
Open joint proportion (façade)		50 mm/50%	
UV stability		>10 years	
Temperature resistance		-35°C to +120°C	
5,000-hour test		passed	
Minimum roof slope		10°	
Fall-resistance		passed	DIN 4426

Area of application: Non-combustible, diffusion-permeable black membrane for ventilated façades with open joints behind energy-generating systems (PV, solar) and as a fall-resistant roofing membrane.



13859-1 5000-
13859-2 hour-test

 **ISO 9001**
Swiss Research

Delivery forms

Item no.	Product name	Roll size	Pallet contents
7640442092107	Ampatop® A black	1,4m × 50m = 70m ²	36 rolls = 2520m ²

Application example

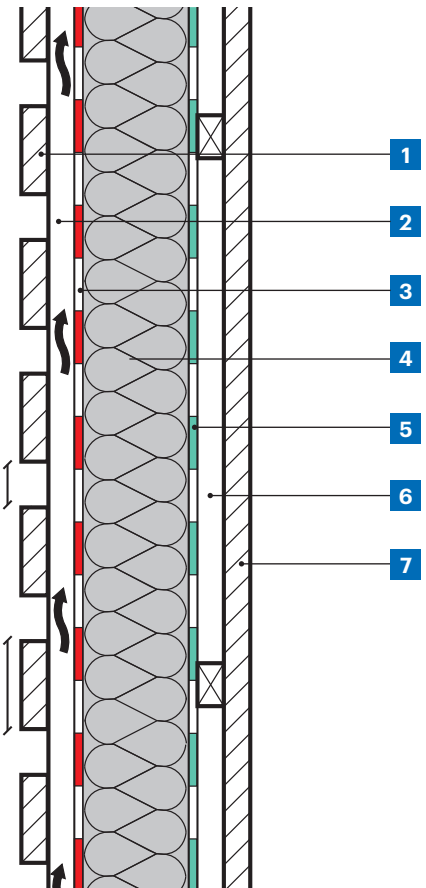
- | | |
|--|--|
| <ul style="list-style-type: none"> 1 Outer lining 2 Ventilation level 3 Façade membrane Ampatop® A black 4 Thermal insulation | <ul style="list-style-type: none"> 5 Ampatex® or Sisalex® vapour check 6 Installation level 7 Inner lining |
|--|--|

System accessories



d = max. 50 millimetres

min. 1,0×d



Application tips

Ampatop® A black can be laid horizontally or vertically with the black side facing outwards. Roll out the membrane, line it up, cut it to length, pull it tight and fix it in place (e.g. using stainless steel tacks). This should be invisible inside the overlap, which must be at least 10 cm. Always mount the final mechanical fixation after laying (e.g. counter battens)! **Ampacoll® ND.Pads** (nail seals) or **Ampacoll ND.Band** (nail sealing tape) should be used for this.


The system adhesive tape **Ampacoll® A Tape black** should be used to bond overlaps in a wind- and rainproof manner. Rub down adhered areas thoroughly. Pressing the adhesive tape requires a pressure-resistant surface. **Ampacoll® Profix** liquid adhesive can be used for connections. These are then covered with the membrane or the adhesive


tape **Ampacoll® A Tape black**. This best-practice method also applies to necessary penetrations (e.g. for air vents, balcony mounts and cable holes) as well as window joints. Visible leakage of the adhesive must be avoided. **Ampacoll® Profix** is also used to bond **Ampatop® A black** to metal furring within the insulation layer.

The maximum distance horizontally or vertically is 1,4m, and the minimum width of the profiles is 4 cm. The insulation must fill the entire cavity and be laid evenly and secured in place, so that the façade membrane is not negatively affected (no bulging, pushing out, etc.). When installing on surfaces that cannot be stapled, pressure-resistant insulating materials or similar, it is recommended to bond using **Ampacoll® Profix** every 70 cm horizontally and vertically, especially

when only individual or sporadic brackets are installed for final fixing. Maximum spacing between individual fixings: 70 cm (horizontal and vertical).

Attention: Protruding attachments must be split at insulation level and should not penetrate the membrane (e.g. two-piece brackets with clamping flanges).

 Please observe the recommendations for use and further system products in our adhesives matrix

 Further information and detailed documentation at www.ampack.biz

Purchase through specialist stockists

Ampack Switzerland: +41 71 858 38 00
Ampack Austria: +43 5523 53433
Ampack Germany: +49 7621 1610264
Ampack France: +33 4 50 83 70 54
Ampack Italy: +39 0471 053 475
Ampack Ireland: +353 91 394 467
www.ampack.biz



The information contained herein may have been superseded by new findings or developments. Current Information can be found at www.ampack.biz. © Ampack AG, Rorschacherberg, 01.2026

3013EU/EX.YY(AR)0126

